



# ELECTRIFIED DOOR HARDWARE

<b>ABOUT US</b>	2	<b>POWER ACCESSORIES</b>	38
<b>ELECTRIFIED MORTISE LOCKS</b>	4	<b>POWER SUPPLIES</b>	42
<b>ELECTRIFIED CYLINDRICAL LOCKS</b>	14	<b>POWER TRANSFER HINGES</b>	44
<b>ELECTRIFIED EXIT TRIM</b>	20	<b>POWER TRANSFER PIVOTS</b>	52
<b>EXIT DEVICES &amp; KITS</b>	27	<b>DOOR LOOPS</b>	53



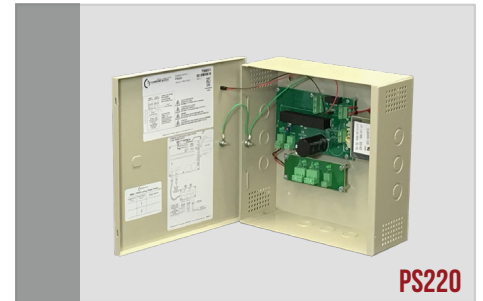
# ABOUT COMMAND ACCESS



MLRK1-FAL17



LPM190



PS220

## INNOVATIVE SOLUTIONS

### INNOVATIVE SOLUTIONS

We are committed to finding better, more cost effective ways to furnish the electrified opening. Our commitment to our in-house engineering department supports our goal to provide our customers with the right solution at the right price and the right time. We appreciate all ideas and suggestions from our customer base.



**BUILT IN USA**

### BUILT IN USA

Our commitment to American made products started from our humble beginnings with one milling machine and drill press. Moving forward our American owned/operated factory has continued investing in sophisticated US made multi-axis machine centers, allowing us to produce cost effective products right here in the USA.

## NO HASSLE 3 YEAR WARRANTY

**LIMITED WARRANTY:** Command Access Technologies warrants that its products are free from defects in workmanship and material under normal use and service. Since CAT does not control product usage, CAT makes no representation as to the degree of security conveyed by the use of any product. This warranty does not cover defects or damage which occur from improper maintenance, improper storage, improper installation, shipping and handling, ordinary wear and tear, misuse, abuse, accidents, unauthorized service, work done by others or consequential damages. CAT will not pay for the cost of repair performed other than in accordance with this warranty. CAT can only perform authorized warranty work at the factory. CAT's only liability, in tort or contract, whether under this warranty or otherwise, is limited to providing repair or replacement of any product or component part which is proven to be defective as covered by the warranty, within three (3) years after delivery from CAT to the original purchaser. Written notice of a product or component part believed to be defective, as covered by this warranty, should be sent to Command Access Technologies 22901 La Palma Avenue, Yorba Linda, CA 92887. Include Claimant's name, address, phone, and identification of the product, invoice number and date, and a brief description of the defect. Upon receipt of such notice, a CAT representative will contact claimants to where to ship such product or component part, with shipping charges prepaid, for examination and, in the event such examination reveals a defect covered by this warranty, the product will be repaired (existing product installed 6+ months) or replaced (all new installations of 6 months or less). This warranty is in lieu of all other express warranties. To the extent permitted by law, all implied warranties are limited to the duration of this warranty. CAT shall not be liable for any incident or consequential damages. Some states do not allow limitations on how long an implied warranty lasts or the exclusion or limitation of incidental or consequential damages, so the above may not apply to you. This warranty gives you specific legal rights, and you may have other rights, which vary, from state to state.

# SALES TEAM ROSTER

ALWAYS HERE TO HELP



**DAYENA CHERRY**

CSR TEAM MEMBER

DC@COMMANDACCESS.COM



**JORDAN HENDERSON**

CSR TEAM MEMBER

JH@COMMANDACCESS.COM



**DANNY LOPEZ**

CSR TEAM MEMBER

DL@COMMANDACCESS.COM



**SARAH AFARIAN**

CSR MANAGER

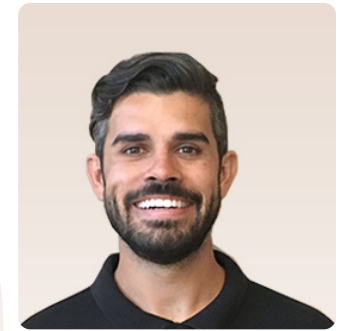
SA@COMMANDACCESS.COM



**JOHN VAN ANDRIGHEM**

TECH SUPPORT LEAD

JV@COMMANDACCESS.COM



**MATEO KRISTOFF**

DIRECTOR OF SALES & MARKETING

MK@COMMANDACCESS.COM

ALWAYS HERE TO HELP



LIVE CHAT

- WE ANSWER THE PHONE WITH A **LIVE VOICE**, MONDAY THRU FRIDAY 7:30AM - 4:30PM PST
- OUR CUSTOMER SERVICE DEPARTMENT STRIVES TO **DELIVER EXCELLENT CUSTOMER SATISFACTION**
- OUR **LIVE CHAT** IS OPERATED BY OUR CUSTOMER SERVICE TEAM MAKING IT EASY TO GET A HOLD OF US, ESPECIALLY IF YOU LIKE TO MULTI-TASK
- WE STRIVE TO ACKNOWLEDGE YOUR ORDER WITHIN 24 HOURS
- OUR **LEAD TIMES ARE 5-10 DAYS** FOR CATALOGED ITEMS. IF WE CAN SHIP SOONER, WE WILL SURE TRY!
- IF WE MAKE A MISTAKE, WE ARE COMMITTED TO MAKING IT RIGHT
- OUR WEBSITE IS USER FRIENDLY AND EXPANDING DAILY WITH INFORMATION & DEMONSTRATION VIDEOS
- WE HAVE COMPETENT, REACHABLE TECHNICAL SUPPORT EVERYDAY DURING BUSINESS HOURS
- ANYONE WHO NEEDS OUR SUPPORT GETS IT
- WE ARE WILLING TO TRAIN ON AT THE FACTORY, AT YOUR CUSTOMERS OR VIA WEBINAR
- WE TAKE GOOD MECHANICAL PRODUCTS & TURN THEM INTO BETTER ELECTROMECHANICAL PRODUCTS
- WE WILL SHIP REPLACEMENT PRODUCTS AS SOON AS POSSIBLE, USUALLY WITHIN THE NEXT BUSINESS DAY
- ALL OF OUR DOCUMENTS, INCLUDING ACKNOWLEDGMENTS, INVOICES, STATEMENTS, AND RMA'S WILL BE EMAILED



SCAN ME OR CLICK



WORLD HEADQUARTERS: 22901 LA PALMA AVE., YORBA LINDA CA 92887

EAST COAST WAREHOUSE: 106 SPRING LAKE DRIVE, NEW BRITAIN, PA 18901

www.commandaccess.com | US Customer Support 888.622.2377





# ELECTRIFIED MORTISE LOCKS



## FEATURES

- EASY INSTALLATIONS - RELIABLE PERFORMANCE
- GRADE 1, ANSI RATED, 3 YEAR WARRANTY ON ALL ELECTRICAL & MECHANICAL PARTS
- UL, CSA, CSFM LISTED
- QUICK TO SHIP & A FAIR PRICE
- BUILT IN THE USA - DURABLE & DEPENDABLE
- ALLOWS FOR REMOTE KEYLESS ACCESS & EGRESS CONTROL
- MULTIPLE FUNCTIONS AND VOLTAGES TO MEET YOUR REQUIREMENTS
- COMMON APPLICATIONS INCLUDE STAIRWELL DOORS, LOBBY ENTRANCES, COMPUTER ROOMS, CLASSROOMS, INTERIOR & EXTERIOR DOORS IN SCHOOLS, HOSPITALS, OFFICES AND PUBLIC BUILDINGS
- MORTISE LOCKS CAN BE ORDERED COMPLETE, CHASSIS ONLY, OR MODIFICATION ONLY.



## FUNCTIONS

**Storeroom** – Latchbolt retracted by key outside or lever inside. **Fail Secure** - Applied power allows outside lever to retract latchbolt (EU) or **Fail Safe** - prevents latchbolt from retracting (EL). Inside lever is always free for immediate egress.

**Classroom** – Latchbolt retracted by key outside or lever inside. **Fail Secure** -Applied power allows outside lever to retract latchbolt (EU) or **Fail Safe** - prevents latchbolt from retracting (EL). . Outside lever can be maintained unlocked by key. Inside lever is always free for immediate egress.

**Institutional** – Latchbolt retracted by key on either side. **Fail Secure** - Applied power allows outside lever to retract latchbolt (EU) or **Fail Safe** - prevents latchbolt from retracting (EL).

**Entry w/deadbolt** – Latchbolt and deadbolt retracted by key outside or lever inside. **Fail Secure** - Applied power allows outside lever to retract latchbolt and deadbolt (EU) or **Fail Safe** -prevents latchbolt and deadbolt from retracting (EL). Inside lever is always free for immediate egress.

**Privacy w/deadbolt** - Latchbolt and deadbolt retracted by key outside or lever inside. **Fail Secure** - Applied power allows outside lever to retract latchbolt (EU) , unless deadbolt is thrown. Inside lever is always free for immediate egress. Available in EU (electronically unlocked) function only.

# HOW TO ORDER

 ALWAYS HERE TO HELP

FOR MODIFICATION, CHASSIS ONLY AND COMPLETE LOCKS


**PREFIX or SUFFIX**  
 MD - Modification - Prefix  
 CH - Chassis Only - Suffix

**MODEL + FUNCTION**  
 Select a model number and add  
 EL (Fail Safe) - Electronically Locked  
 EU (Fail Secure) - Electronically Unlocked

**VOLTAGE**  
 12 or 24 Volts must be specified  
 Motorized = Universal Input 11-30V

**OPTIONAL SWITCHES**  
 REX - Request-to-Exit      DBM - Deadbolt Monitor  
 DPS - Door Position Switch  
 LBM - Latchbolt Monitor

**M-OPTION FOR MORTISE LOCK**  
 For Command Access & Schlage model #s only.



- Intelligent auto voltage sensing 11-30 VDC
- Extremely low holding current = motorized
- Field selectable EU/EL with press of a button

FOR AND COMPLETE LOCKS ONLY

**TRIM**

 - Tubular       - Straight       - Escutcheon  
 - Bent       - Curved

**FINISH** (BHMA std)

613 - Oil Rubbed Bronze      626 - Satin Chrome  
 625 - Polished Chrome

**SPECIAL ORDER**

605 - Polished Bronze      612 - Satin Bronze  
 606 - Satin Brass      630 - Satin Stainless

**KEYWAY**

S - "C" Kwy Standard      SFIC - Small Format I/C Prep  
 LC - Less Cylinder      LFIC - Factory Large Format I/C Prep

**ACCESSORIES**

Faceplates - Storeroom function in specified finishes  
 Strikes - 4-7/8" ASA Strike in specified finishes  
 CRU2 - Current Reduction Unit (AC & DC input)  
 4 Lead - 4' Wire Lead to switches  
 10 Lead - 10' Wire lead to switches  
 QC - Molex Connectors  
 BR1 - Bridge Rectifier w/ 12" lead (included)  
 BR5 - Bridge Rectifier w/ 5' lead

## EXAMPLES

### MODIFICATION ONLY

	PREFIX	MODEL	FUNCTION	SUFFIX	VOLTAGE	FINISH	KEYWAY	OPTIONS	ACC	COMPLETE PART #
Part #	MD	ML80	EL	-	12	-	-	REX	CRU2	MDML80 EL 12V REX CRU2
List \$	-	\$144	-	-	-	-	-	\$65	\$37	\$246

### CHASSIS ONLY

	PREFIX	MODEL	FUNCTION	SUFFIX	VOLTAGE	FINISH	KEYWAY	OPTIONS	ACC	COMPLETE PART #
Part #	-	ML19092	EU	CH	-	-	-	REX LBM	-	ML19092 EU CH REX LBM
List \$	-	\$348	-	-	-	-	-	\$130	-	\$478

### COMPLETE LOCK

	PREFIX	MODEL	FUNCTION	SUFFIX	VOLTAGE	FINISH	KEYWAY	OPTIONS	ACC	COMPLETE PART #
Part #	-	ML1485	EU	L3B	12	626	S	REX	QC	ML1485 EU L3B 24V 626 S REX QC
List \$	-	\$605	-	+\$18	-	-	-	\$65	\$32	\$720

## QUICK REFERENCE

ML LOCK	PAGE	ML LOCK	PAGE	ML LOCK	PAGE
COMMAND ML1	6	ACCURATE-BEST 35	11	ACCESSORIES	13
COMMAND MRC1	6	BEST 45 -CORBIN	11		
COMMAND LPM1	7	FALCON -YALE	12		



# ELECTRIFIED MORTISE LOCKS



## COMMAND ACCESS ML1 SERIES

- COMPATIBLE WITH SCHLAGE L9000 SERIES - DIRECT CHASSIS REPLACEMENT
- FEATURES & PERFORMANCE FOUND IN DOMESTICALLY MADE ANSI GRADE 1 MORTISE LOCKS AT A SIGNIFICANTLY LOWER COST
- FIELD INSTALLABLE REX KIT AVAILABLE
- ADDITIONAL OPTIONS INSTALLED AT FACTORY: REX, DPS, LBM, REXBPS (PG 12)
- FIELD REVERSIBLE HANDING WITHOUT OPENING LOCK CASE
- HIGHEST QUALITY MANUFACTURING BUILT TO LAST IN YORBA LINDA, CA
- MOTORIZED OPTION AVAILABLE 11-30V, FIELD SELECTABLE EU/EL



MODELS		TRIM	LEVERS	FINISHES	DIMENSIONS		
• ML170	Classroom	L	3	605*	Diameter		
• ML180	Storeroom			612*			
• ML182	Institutional	L_B	6	613	L = 2-7/16"		
• ML1480	Entrance w/ Deadbolt			625	LB= 2-3/4"		
• ML1482	Institutional w/ Deadbolt			626	ESC= 1-3/4" x 8"		
• ML1485	Privacy w/ Deadbolt	ESC	7	630*	<b>INDICATOR</b>		
• ML19092	<i>Motorized</i> Storeroom			17		*Special Order	IND-1
• ML19095	<i>Motorized</i> Institutional						IND-2

Complete Example: ML180 EU 24V ESC6 626

\* B Rose available upcharge list \$18 \*\*Upcharge \$55 for Escutcheon - Please call to confirm stock

## SOLENOID LOCKS

### COMMAND ACCESS COMPLETE LOCK RETROFIT SCHLAGE L9000

Specify Voltage. Field Hand-able. Fail Secure/Fail Safe. LFIC = Schlage compatible housing

✓ or \$ = Available  
- = Not Available

PART #	COMPLETE LOCK LIST \$	CHASSIS ONLY LIST \$	IN-STOCK TRIM					IN-STOCK FINISHES				KEYWAY		OPTIONAL SWITCHES				
			L3	L6	L7	L17	ESC	626	625	613	LC	SC	SFIC	LFIC	REX	LBM	DPS	DBM
ML170EU/EL	\$541	\$329	L3	L6	L7	L17	+55	✓	✓	✓	-	✓	+\$66	+\$28	+\$65	+\$65	-	-
ML180EU/EL	\$515	\$303	L3	L6	L7	L17	+55	✓	✓	✓	-	✓	+\$66	+\$28	+\$65	+\$65	+\$65	-
ML182EU/EL	\$556	\$325	L3	L6	L7	L17	-	✓	✓	✓	-	✓	+\$132	+\$56	+\$65	+\$65	+\$65	-
ML1480EU/EL	\$556	\$344	L3	L6	L7	L17	-	✓	✓	✓	-	✓	+\$66	+\$28	+\$65	+\$65	-	+\$65
ML1482EU/EL	\$596	\$365	L3	L6	L7	L17	-	✓	✓	✓	-	✓	+\$132	+\$56	+\$65	+\$65	-	+\$65
ML1485EU	\$605	\$393	L3	L6	L7	L17	-	✓	✓	✓	-	✓	+\$66	+\$28	+\$65	+\$65	-	+\$65

\* B Rose available upcharge list \$18 \*\*Upcharge \$55 for Escutcheon - Please call to confirm stock

## MOTORIZED LOCKS

### COMMAND ACCESS COMPLETE LOCK RETROFIT SCHLAGE L9000

11-30V, Field Selectable Fail Secure/Fail Safe. Field Hand-able. LFIC = Schlage compatible housing



PART #	COMP LIST \$	CH LIST \$	IN-STOCK TRIM					IN-STOCK FINISHES				KEYWAY		OPTIONAL SWITCHES				
			L3	L6	L7	L17	ESC	626	625	613	LC	SC	SFIC	LFIC	REX	LBM	DPS	DBM
ML19092	\$560	\$348	L3	L6	L7	L17	+55	✓	✓	✓	-	✓	+\$66	+\$28	+\$65	+\$65	-	-
ML19095	\$600	\$369	L3	L6	L7	L17	+55	✓	✓	✓	-	✓	+\$132	+\$56	+\$65	+\$65	-	-

Command Access is not a licensee or affiliated, associated or connected with Allegion, Assa Abloy, Dorma, Stanley Security, Adams Rite, Arrow, Corbin Russwin, Mckinney, Pemko, Rixson, Sargent, Yale, Dor-O-matic, Falcon, Ives, Monarch, Schlage, Von Duprin, Best, Precision, Accurate, AHT, Baldwin, Bommer, Cal Royal, CR Laurence, Design Hardware, Emtex, First Choice, FSB, General Lock, Hager, Jackson, Keedex, Lawrence, LSDA, Marks, Marshal-Best, Molex, Omnia, PBB, PDQ, or any of their subsidiaries or affiliates.

# MECHANICAL LOCKS COMMAND ACCESS COMPLETE LOCK RETROFIT SCHLAGE L9000

ALWAYS HERE TO HELP

✓ or \$ = Available  
 - = Not Available

Field Hand-able. LFIC = Schlage compatible housing

PART #	COMP LIST \$	CH LIST \$						626	625	613	L	SC	SFIC	LFIC	REX	LBM	DPS	DBM
ML1010	\$361	\$175	L3	L6	L7	L17	+55	✓	✓	✓	-	✓	+\$66	+\$28	+\$65	+\$65	+\$65	-
ML1040	\$382	\$181	L3	L6	L7	L17	+55	✓	✓	✓	-	✓	+\$66	+\$28	+\$65	+\$65	-	-
ML1053	\$399	\$198	L3	L6	L7	L17	-	✓	✓	✓	-	✓	+\$66	+\$28	+\$65	+\$65	-	+\$65
ML1050/70	\$388	\$187	L3	L6	L7	L17	+55	✓	✓	✓	-	✓	+\$66	+\$28	+\$65	+\$65	+\$65	-
ML1080	\$388	\$187	L3	L6	L7	L17	+55	✓	✓	✓	-	✓	+\$66	+\$28	+\$65	+\$65	+\$65	-
ML1082	\$429	\$209	L3	L6	L7	L17	-	✓	✓	✓	-	✓	+\$132	+\$56	+\$65	+\$65	+\$65	-

\* B Rose available up charge list \$18 \*\*Upcharge \$55 for Escutcheon - Please call to confirm stock



## COMMAND ACCESS MRC1 RETROFIT CHASSIS

- Our mortise retrofit chassis only series includes faceplate & strikeplate 626 standard
- ANSI Grade 1 mortise lock, UL Listed
- Significantly lower cost
- Additional options installed at factory: REX, DPS, & LBM (pg 13)
- Field reversible handing without opening lock case
- Works with the original manufacturers' trim (*\*some exceptions- Corbin Museo® Collection*)

MODELS	FUNCTIONS	FINISHES
• MRC135D	Best 35/45 Storeroom	613
• MRC135W	Best 35/45 Institutional	625
• MRC18080	Cal Royal 8000 Storeroom	626
• MRC180802	Cal Royal 8000 Institutional	
• MRC105/03	Corbin Russwin 2000 Storeroom	
• MRC104/01	Corbin Russwin 2000 Institutional	
• MRC181/51	Falcon MA Storeroom	
• MRC121/11	Falcon MA Institutional	
• MRC1681/1651	Falcon MA Entrance w/ Deadbolt	<i>Complete Example: MRC135W 626</i>

## COMMAND ACCESS MRC1 SERIES

### RETROFIT CHASSIS ONLY

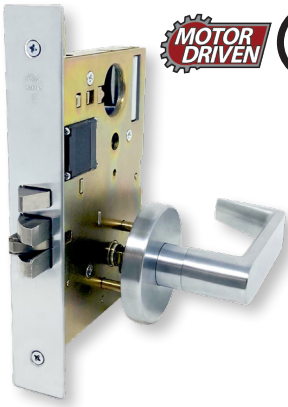
Specify Voltage and Handing. Includes 626 faceplate & strike (other finishes available upon request at an upcharge \$60).

	PART #	LIST \$	626	LC	SC	SFIC	LFIC	REX	LBM	DPS	DBM
<b>BEST 35 SERIES</b>	MRC135D EU/EL	\$410	✓	-	-	✓	-	+\$65	+\$65	+\$65	-
	MRC135W EU/EL	\$434	✓	-	-	✓	-	+\$65	+\$65	+\$65	-
<b>CAL ROYAL 8800 SERIES</b>	MRC18080 EU/EL	\$410	✓	✓	+\$34	+\$66	+\$34	+\$65	+\$65	+\$65	-
	MRC18082 EU/EL	\$434	✓	✓	+\$34	+\$66	+\$34	+\$65	+\$65	+\$65	-
<b>CORBIN RUSSWIN 2000 SERIES</b>	MRC105/03 EU/EL	\$410	✓	✓	+\$34	+\$66	+\$34	+\$65	+\$65	+\$65	-
	MRC104/01 EU/EL	\$434	✓	✓	+\$34	+\$66	+\$34	+\$65	+\$65	+\$65	-
<b>FALCON MA SERIES</b>	MRC181/51 EU/EL	\$410	✓	✓	+\$34	+\$66	+\$34	+\$65	+\$65	+\$65	-
	MRC121/11 EU/EL	\$434	✓	✓	+\$34	+\$66	+\$34	+\$65	+\$65	+\$65	-
	MRC1681/51 EU/EL	\$434	✓	✓	+\$34	+\$66	+\$34	+\$65	+\$65	-	+\$65

✓ or \$ = Available  
 - = Not Available



# ELECTRIFIED LATCH PULLBACK



## COMMAND ACCESS LPM190 SERIES

- LPM1 SERIES IS MOTORIZED ELECTRIC LATCH PULLBACK IN A STANDARD MORTISE LOCK; COMPLETELY RETRACTED FOR A PUSH-PULL CONDITION OR IN CONJUNCTION WITH LOW ENERGY OPERATOR
- MORTISE LOCK VERSION AND APPLICATION SIMILAR TO PANIC ELR
- ALLOWS FOR UP TO 350' LONG WIRE RUNS & CONTINUOUS DUTY
- ALSO AVAILABLE WITH LEVER CONTROL - EU OR EL

## SPECIFICATIONS

- No special lock prep required – fits standard mortise pocket.
- Retrofits Schlage “L” series lock
- All motors & solenoids rated for continuous duty . . . whether you’re powering for 5 seconds or 8 hrs.
- Latch Retraction operating voltage 24VDC: Surge current- 1A, holding current-300mA
- Lever control- 700mA @ 12V or 350mA @ 24V
- 3 year “no hassle” warranty issues reliability to the owner
- Latch Pullback available in EU (Fail Secure) only; lever control available in EL (Fail Safe) or EU (Fail Secure)
- UL Listed

TRIM	LEVERS	DIMENSIONS
L	3	Diameter L = 2-7/16” LB= 2-3/4” ESC= 1-3/4” x 8”  *Special Order Complete Example: ML180 L7B 626
L_B	6	
ESC	7	
	17	



RECOMMENDED WITH COMMAND ACCESS ETH + POWER SUPPLY

√ or \$ = Available  
 - = Not Available

## COMMAND ACCESS LPM1 SERIES

PART #	COMPLETE LOCK LIST \$	CHASSIS ONLY LIST \$	IN-STOCK TRIM					IN-STOCK FINISHES			KEYWAY	OPTIONAL SWITCHES					
			L3	L6	L7	L17	ESC*	626	625	613	LC	SC	SFIC	LFIC	REX	LBM	DPS
LPM1910 <sup>1</sup>	\$857	\$660	L3	L6	L7	L17	ESC*	✓	✓	✓	-	✓	+\$66	+\$28	+\$65	+\$65	_2
LPM190 <sup>1</sup>	\$857	\$660	L3	L6	L7	L17	ESC*	✓	✓	✓	-	✓	+\$66	+\$28	+\$65	+\$65	_2
LPM192 <sup>1</sup>	\$894	\$682	L3	L6	L7	L17	-	✓	✓	✓	-	✓	+\$66	+\$28	+\$65	+\$65	_2
LPM193 <sup>1</sup>	\$1047	\$816	L3	L6	L7	L17	ESC*	✓	✓	✓	-	✓	+\$66	+\$28	+\$65	+\$65	_2
LPM194 <sup>1</sup>	\$1047	\$816	L3	L6	L7	L17	ESC*	✓	✓	✓	-	✓	+\$66	+\$28	+\$65	+\$65	_2
LPM195 <sup>1</sup>	\$1047	\$816	L3	L6	L7	L17	-	✓	✓	✓	-	✓	+\$66	+\$28	+\$65	+\$65	_2
LPM196 <sup>1</sup>	\$1047	\$816	L3	L6	L7	L17	-	✓	✓	✓	-	✓	+\$66	+\$28	+\$65	+\$65	_2
LPM197 <sup>1</sup>	\$1047	\$816	L3	L6	L7	L17	-	✓	✓	✓	-	✓	+\$132	+\$56	+\$65	+\$65	_2
LPM198 <sup>1</sup>	\$1047	\$816	L3	L6	L7	L17	-	✓	✓	✓	-	✓	+\$132	+\$56	+\$65	+\$65	_2

\* B Rose available up charge list \$18 \*\*Up charge \$55 for Escutcheon - Please call to confirm stock

1. LPM180 Solenoid Series - Limited Availability - Call for Pricing

2. See IDPS Series for Door Position option

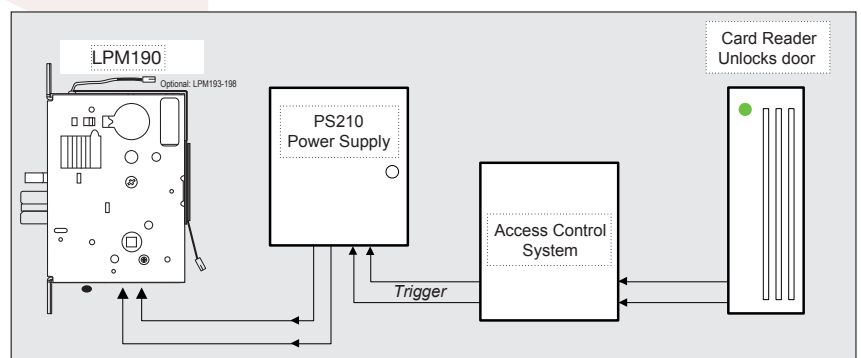
Command Access is not a licensee or affiliated, associated or connected with Allegion, Assa Abloy, Dorma, Stanley Security, Adams Rite, Arrow, Corbin Russwin, Mckinney, Pemko, Rixson, Sargent, Yale, Dor-O-matic, Falcon, Ives, Monarch, Schlage, Von Duprin, Best, Precision, Accurate, AHT, Baldwin, Bommer, Cal Royal, CR Laurence, Design Hardware, Emtek, First Choice, FSB, General Lock, Hager, Jackson, Keedex, Lawrence, LSDA, Marks, Marshal-Best, Molex, Omnia, PBB, PDQ, or any of their subsidiaries or affiliates.



<b>LPM1910EU</b> passage	<b>Latchbolt Control:</b> <i>Motorized</i> Latchbolt retracted by lever outside or by lever inside. Applied power electronically (EU) retracts latchbolt for push/pull operation. <b>Lever Control:</b> <u>Outside Lever &amp; Inside Lever</u> Always free ingress & egress
<b>LPM190EU</b> storeroom	<b>Latchbolt Control:</b> <i>Motorized</i> Latchbolt retracted by key outside or by lever inside. Applied power electronically (EU) retracts latchbolt for push/pull operation. <b>Lever Control:</b> <u>Outside Lever</u> Always Rigid (Locked) <u>Inside Lever</u> Always free egress
<b>LPM192EU</b> institutional	<b>Latchbolt Control:</b> <i>Motorized</i> Latchbolt retracted by key outside or inside (Double Cylinder operation). Applied power electronically (EU) retracts latchbolt for push/pull operation. <b>Lever Control:</b> <u>Outside Lever &amp; Inside Lever</u> Always Rigid (Locked)
<b>LPM193EUxEL</b> <b>LPM194EUxEU</b> storeroom X storeroom	<b>Latchbolt Control:</b> <i>Motorized</i> Latchbolt retracted by key outside or inside Applied power electronically (EU) retracts latchbolt for push/pull operation. <b>Lever Control:</b> <u>Outside Lever</u> EL - locked electronically: Applied power prohibits Outside lever from retracting latchbolt. EU - unlocked electronically: Applied power allows Outside lever to retract latchbolt. <u>Inside Lever</u> Always free egress. Latchbolt retracted by key outside or inside. Applied power electronically (EU only) retracts latchbolt for push/pull operation.
<b>LPM195EUxEL</b> <b>LPM196EUxEU</b> institutional X storeroom	<b>Latchbolt Control:</b> <i>Motorized</i> Latchbolt retracted by key outside or inside Applied power electronically (EU) retracts latchbolt for push/pull operation. <b>Lever Control:</b> <u>Outside Lever</u> Always Clutching (Does not activate outside lever at anytime) <u>Inside Lever</u> EL - locked electronically: Applied power prohibits Inside lever from retracting latchbolt. EU - unlocked electronically: Applied power allows Inside lever to retract latchbolt.
<b>LPM197EUxEL</b> <b>LPM198EUxEU</b> institutional X institutional	<b>Latchbolt Control:</b> <i>Motorized</i> Latchbolt retracted by key outside or inside (Double Cylinder operation). Applied power electronically (EU only) retracts latchbolt for push/pull operation. <b>Lever Control:</b> <u>Outside Lever &amp; Inside Lever</u> EL - locked electronically: Applied power prohibits both levers from retracting latchbolt. EU - unlocked electronically: Applied power allows both levers to retract latchbolt.

## CONTROLLED ACCESS APPLICATION

The Command Access LPM190 mortise lock may be utilized in conjunction with any access control application using standard mortise locksets. When activated the LPM190 creates a push/pull that satisfies both in-swinging and out-swinging doors. Inside free egress can be attained by turning the inside lever to manually open the door. Outside access is controlled by the access control system or by physical key override.





# ELECTRIFIED LATCH PULLBACK

## COMMAND ACCESS UNIVERSAL BATHROOM PRIVACY KIT

- UTILIZES THE ONLY LATCH PULLBACK X LEVER CONTROL IN A ML LOCK
- INCLUDES ACCESS CONTROLS NEEDED TO ADD PRIVACY FUNCTION TO SINGLE OCCUPANCY RESTROOM, MAINTAINS ADA ACCESSIBILITY
- INCLUDES WIRE DIAGRAM
- 2 PACKAGES: 1 INCLUDES EVERYTHING + ADD TO YOUR OPERATOR OF CHOICE. 2 INCLUDES EVERYTHING INCLUDING HIGH QUALITY LOW ENERGY OPERATOR.



Green LED → Vacant  
Red LED → Occupied

### LOW ENERGY OPERATOR



INCLUDED WITH UPBK2



IN THE EVENT OF AN EMERGENCY  
PUSH EMERGENCY BUTTON  
AND AUDIBLE AND VISUAL SIGNAL  
WILL ACTIVATE

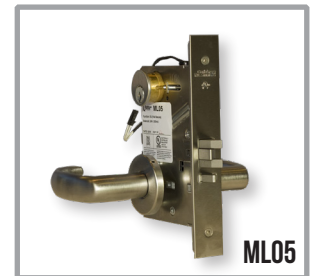
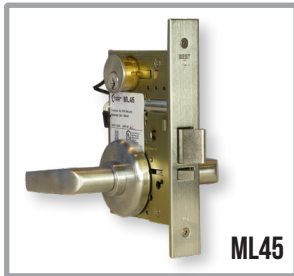
ADD ON EMERGENCY KIT

KIT	TRIM	LEVERS	DIMENSIONS
<ul style="list-style-type: none"> <li>• UBPK1-FM-EUxEL</li> <li>• UBPK1-FM-EUxEU</li> <li>• UBPK1-SM-EUxEL</li> <li>• UBPK1-SM-EUxEU</li> <li>• UBPK2-FM-EUxEL</li> <li>• UBPK2-SM-EUxEL</li> <li>• UBPK2-SM-EUxEU</li> </ul>	L L_B ESC	3 6 7 17	Diameter L = 2-7/16" LB = 2-3/4" ESC = 1-3/4" x 8" <b>Complete Example: UBPK1-FM-EUxEL L6B 626</b>

UBPK1-FM-EUxEL	Includes: PS220B, LPM193 Complete Lock ( latch retraction EU x lever control EL), Logic Module, Illuminated Outside/Inside (Push to Open & Push to Lock) IDPS door contact, power transfer hinge, Flush mounted push buttons.	\$2230
UBPK1-FM-EUxEU	Includes: PS220B, LPM194 Complete Lock ( latch retraction EU x lever control EU), Logic Module, Illuminated Outside/Inside (Push to Open & Push to Lock), IDPS door contact, power transfer hinge, Flush mounted push buttons.	\$2230
UBPK1-FM-EUxEL	Includes: PS220B, LPM193 Complete Lock ( latch retraction EU x lever control EL), Logic Module, Illuminated Outside/Inside (Push to Open & Push to Lock), IDPS door contact, power transfer hinge, Flush mounted push buttons.	\$2230
UBPK1-SM-EUxEL	Includes: PS220B, LPM193 Complete Lock ( latch retraction EU x lever control EL), Logic Module, Illuminated Outside/Inside (Push to Open & Push to Lock), IDPS door contact, power transfer hinge, Surface mounted push buttons.	\$2230
UBPK1-SM-EUxEU	Includes: PS220B, LPM194 Complete Lock ( latch retraction EU x lever control EU), Logic Module, Illuminated Outside/Inside (Push to Open & Push to Lock) IDPS door contact, power transfer hinge, Surface mounted push buttons.	\$2230
UBPK2-FM-EUxEL	Includes: Low Energy Operator, LPM193 Complete Lock ( latch retraction EU x lever control EL), IDPS door contact, Illuminated Outside/Inside (Push to Open & Push to Lock), power transfer hinge, Flush mounted push buttons.	\$4880
UBPK2-FM-EUxEU	Includes: Low Energy Operator, LPM194 Complete Lock ( latch retraction EU x lever control EU), IDPS door contact, Illuminated Outside/Inside (Push to Open & Push to Lock), power transfer hinge, Flush mounted push buttons.	\$4880
UBPK2-SM-EUxEL	Includes: Low Energy Operator, LPM193 Complete Lock ( latch retraction EU x lever control EL), IDPS door contact, Illuminated Outside/Inside (Push to Open & Push to Lock), power transfer hinge, Surface mounted push buttons.	\$4880
UBPK2-SM-EUxEU	Includes: Low Energy Operator, LPM194 Complete Lock ( latch retraction EU x lever control EU), IDPS door contact, Illuminated Outside/Inside (Push to Open & Push to Lock), power transfer hinge, Surface mounted push buttons.	\$4880
EME KIT ADD	Add on Emergency Annunciator Kit for UBPK (Pictured Above)	\$575

# ELECTRIFIED MORTISE LOCKS

ALWAYS HERE TO HELP



✓ or \$ = Available  
- = Not Available

PART #	LIST \$			Stock Trim Styles				Stock Finishes			Keyway		Optional Switches				
	COMPLETE LOCK List \$	CHASSIS ONLY List \$	MODIFICATION ONLY List \$	4	4	4	4	626	625	613	LC	SC	SFIC (less core)	LFIC (less core)	Request to Exit (REX)	Latchbolt Monitor (LBM)	Door Position (DPS)

## ACCURATE

MODIFICATION ONLY (Customer's Accurate 9145/FSB 7145 Chassis)  
Specify EU or EL, Voltage and Handing.

STOREROOM	ML59EU/EL	-	-	\$160	-	-	-	-	-	-	-	-	-	-	-	-	+\$65	+\$65	+\$65	-
-----------	-----------	---	---	-------	---	---	---	---	---	---	---	---	---	---	---	---	-------	-------	-------	---

## ARROW

MODIFICATION ONLY (Customer's AM17 or BM17 Chassis) - Specify EU or EL, Voltage and Handing.

FUNCTION	PART #	COM \$	CH \$	MD \$	4	4	4	4	626	625	613	LC	SC	SFIC	LFIC	REX	LBM	DPS	DBM
STOREROOM	ML77EU/EL	-	-	\$160	-	-	-	-	-	-	-	-	-	-	-	+\$65	-	-	-

## BEST 45

MODIFICATION (Customer's Best 45HD, 45HAB & 45HUNAB Chassis) / CHASSIS ONLY / COMPLETE LOCK  
Specify Voltage and Handing. Special order trims and finishes available. Faceplates & Strikes available in 626

FUNCTION	PART #	COM \$	CH \$	MD \$	4	4	4	4	626	625	613	LC	SC	SFIC	LFIC	REX	LBM	DPS	DBM	
STOREROOM	ML45DEU/EL	\$912	\$490	\$151	3H	15H	-	14H	M*	✓	✓	✓	✓	-	+\$66	-	+\$65	+\$65	+\$65	-
INSTITUTIONAL	ML45WEU/EL	\$979	\$490	\$167	3H	15H	-	14H	-	✓	✓	✓	✓	-	+\$132	-	+\$65	+\$65	+\$65	-
ENTRANCE W/DB	ML453DEU/EL	CALL	\$631	\$167	3H	15H	-	14H	-	✓	✓	✓	✓	-	+\$66	-	-	-	-	-
PRIVACY W/ DB	ML453TEU	CALL	\$675	\$210	3H	15H	-	14H	-	✓	✓	✓	✓	-	+\$66	-	-	-	-	-

## CAL ROYAL

MODIFICATION (Customer's Cal-Royal M8080 & M8453 Chassis) / COMPLETE LOCK  
Specify Voltage and Handing.

FUNCTION	PART #	COM \$	CH \$	MD \$	4	4	4	4	626	625	613	LC	SC	SFIC	LFIC	REX	LBM	DPS	DBM	
STOREROOM	ML8080EU/EL	\$625	-	\$151	TS	SS	GS	JS	-	✓	✓	✓	-	✓	+\$66	+\$28	+\$65	+\$65	-	-
ENTRANCE W/DB	ML8053EU/EL	\$669	-	\$189	TS	SS	GS	JS	-	✓	✓	✓	-	✓	+\$66	+\$28	+\$65	+\$65	-	-

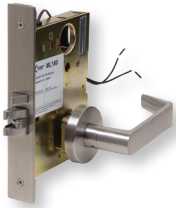
## CORBIN RUSSWIN

MODIFICATION (Customer's Corbin ML2057 Chassis)  
Specify Voltage. Faceplates & Strikes available in 613, 625, 626 (see page 13 for pricing)

FUNCTION	PART #	COM \$	CH \$	MD \$	4	4	4	4	626	625	613	LC	SC	SFIC	LFIC	REX	LBM	DPS	DBM
STOREROOM	ML05EU/03EL	-	\$640	\$149	-	-	-	-	✓	CALL	CALL	✓	✓	+\$66	+\$28	+\$65	+\$65	+\$65	-
INSTITUTIONAL	ML04EU/01EL	-	\$657	\$167	-	-	-	-	✓	CALL	CALL	✓	✓	+\$132	+\$56	+\$65	+\$65	+\$65	-



# ELECTRIFIED MORTISE LOCKS



✓ or \$ = Available  
- = Not Available

PART #	LIST \$			Stock Trim Styles					Stock Finishes			Keyway		Optional Switches				
	COMPLETE LOCK List \$	CHASSIS ONLY List \$	MODIFICATION ONLY List \$	03	06	07	17	L/N	626	625	613	S	LC	SFIC (less core)	LFIC (less core)	Request to Exit (REX)	Latchbolt Monitor (LBM)	Door Position (DPS)

## FALCON

MODIFICATION (Customer's Falcon MA 561/31 Chassis)

Specify Voltage. Faceplates & Strikes available in 613, 625, 626 (see page 13 for pricing)

FUNCTION	PART #	COM \$	CH \$	MD \$	03	06	07	17	L/N	626	625	613	LC	SC	SFIC	LFIC	REX	LBM	DPS	DBM
STOREROOM	ML81EU/51EL	-	-	\$149	-	-	-	-	-	✓	-	✓	✓	✓	+	+	+	+	-	-
INSTITUTIONAL	ML21EU/11EL	-	-	\$167	-	-	-	-	-	✓	-	✓	✓	✓	+	+	+	+	-	-
ENTRANCE W/DB	ML681EU/EL	-	-	\$167	-	-	-	-	-	✓	-	✓	✓	✓	+	+	+	+	-	-

SEE MRC1 SERIES FOR CHASSIS ONLY

1. Not available on deadbolt models
2. Call for availability of deadbolt trims.

## SARGENT

MODIFICATION (Customer's Sargent 8237 Chassis) / CHASSIS ONLY

Specify Voltage. Faceplates & Strikes available in 613, 625, 626

(see page 13 for pricing). Fire link is removed for LBM.

FUNCTION	PART #	COM \$	CH \$	MD \$	03	06	07	17	L/N	626	625	613	LC	SC	SFIC	LFIC	REX	LBM	DPS	DBM
STOREROOM	ML371EU/70EL	-	\$623	\$149	-	-	-	-	-	✓	-	✓	✓	✓	+	+	+	+	-	-
INSTITUTIONAL	ML373EU/11EL	-	\$639	\$167	-	-	-	-	-	✓	-	✓	✓	✓	+	+	+	+	-	-

## SCHLAGE SOLENOID LOCKS

MODIFICATION (Customer's Schlage L9050/9070 & L9453 Chassis) / CHASSIS ONLY /

COMPLETE LOCK Specify Voltage. Faceplates & Strikes available in 613, 625, & 626. Call Factory for other finishes

FUNCTION	PART #	COM \$	CH \$	MD \$	03	06	07	17	L/N	626	625	613	LC	SC	SFIC	LFIC	REX	LBM	DPS	DBM
CLASSROOM	ML70EU/EL	\$1140	\$495	\$152	03	06	07	17	L/N	✓	✓	✓	✓	✓	+	+	+	+	-	-
STOREROOM	ML80EU/EL	\$1130	\$448	\$144	03	06	07	17	L/N	✓	✓	✓	✓	✓	+	+	+	+	+	+
INSTITUTIONAL	ML82EU/EL	\$1207	\$469	\$165	03	06	07	17	L/N	✓	✓	✓	✓	✓	+	+	+	+	+	+
ENTRANCE W/DB	ML480EU/EL	\$1167	\$500	\$172	03	06	07	17	L/N	✓	✓	✓	✓	✓	+	+	+	+	-	+
INSTITUTIONAL W/DB	ML482EU/EL	\$1257	\$520	\$193	03	06	07	17	L/N	✓	✓	✓	✓	✓	+	+	+	+	-	+
PRIVACY w/DB	ML485EU	\$1214	\$555	\$215	03	06	07	17	L/N	✓	✓	✓	✓	✓	+	+	+	+	-	+

**MOTORIZED LOCKS** 11-30V, Field Selectable Fail Secure/Fail Safe. Field Hand-able. LFIC = Schlage compatible housing

FUNCTION	PART #	COM \$	CH \$	MD \$	03	06	07	17	L/N	626	625	613	LC	SC	SFIC	LFIC	REX	LBM	DPS	DBM
STOREROOM	ML92-M EU/EL	\$1167	\$480	\$180	03	06	07	17	L/N	✓	✓	✓	✓	✓	+	+	+	+	-	-
INSTITUTIONAL	ML95-M EU/EL	\$1240	\$501	\$201	03	06	07	17	L/N	✓	✓	✓	✓	✓	+	+	+	+	-	-

## YALE

MODIFICATION (Customer's Yale 8808 Chassis) / CHASSIS ONLY

Specify Voltage and Handing. Faceplates (List \$57) & Strikes available in 626 (see page 13 for pricing).

Fire link is removed for LBM.

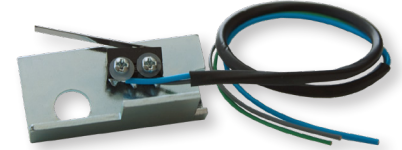
FUNCTION	PART #	COM \$	CH \$	MD \$	CRR	AUR	MOR	PBR	CALL	626	625	613	LC	SC	SFIC	LFIC	REX	LBM	DPS	DBM
STOREROOM	ML91EU/90EL	\$1095	\$646	\$157	CRR	AUR	MOR	PBR	CALL	✓	-	-	✓	✓	+	+	+	+	-	-
INSTITUTIONAL	ML95EU/94EL	\$1161	\$663	\$174	CRR	AUR	MOR	PBR	CALL	✓	-	-	✓	✓	+	+	+	+	-	-

# ACCESSORIES



## MORTISE LOCK SWITCH OPTIONS

A variety of monitoring switches are available for Command Access modified mortise lockset. All switches are SPDT (single pole, double throw) and either mechanical or reed type. Since each manufacturer has different configurations and designs, switch options not available with all mortise locks. Please refer to the dedicated specification page for your desired mortise lock model, or consult the factory for switch application verification. With the exception of a few field installable REX kits, all other switches must be installed at the factory. Here is a list of available switches and their definition.



**REX** - Request to Exit or AE switch available - sends a signal to alert the control panel that the door is about to be opened by someone intending to exit from within the secured area.

**LBM**- Latchbolt Monitor switch available - sends a signal to the control panel to monitor the position of the latchbolt.

**DPS** - Door Position switch available - sends a signal to the control panel to monitor the position of the door.

**DBM** - Deadbolt Monitor switch available - sends a signal to the control panel to monitor the position of the deadbolt.

<b>CATREXKIT-ML<sup>1</sup></b>	Command Access ML1-series mortise lock field installable REX (Request to Exit) kit.	<b>\$65</b>
<b>CATLBMKIT-ML<sup>1</sup></b>	Command Access ML1-series mortise lock field installable LBM (Latchbolt Monitor) kit	<b>\$65</b>
<b>CATREXLBMKIT-ML<sup>1</sup></b>	Command Access ML/Schlage L-series mortise lock field installable LBM (Latchbolt Monitor) + REX (Request to Exit) kit	<b>\$125</b>
<b>SCHREXKIT-ML<sup>1</sup></b>	Schlage L-series mortise lock field installable REX (Request to Exit) kit.	<b>\$65</b>
<b>SCHREXKIT-FE-ML<sup>2</sup></b>	Schlage L909x-series mortise lock field installable REX (Request to Exit) kit.	<b>\$76</b>
<b>REX</b>	Request to Exit switch installed in Mortise Lock	<b>\$65</b>
<b>LBM</b>	Latch Bolt Monitor switch installed in Mortise Lock	<b>\$65</b>
<b>DPS</b>	Door Position switch installed in Mortise Lock	<b>\$65</b>
<b>DBM</b>	Deadbolt Monitor switch installed in Mortise Lock	<b>\$65</b>
<b>RXBP</b>	Request to Exit Switch with Bypass option to shunt the signal during unlocked cycles installed in mortise lock	<b>\$115</b>

1. Requires the lock body to be opened for installation.  
2. Only compatible with new Schlage L909x Lock Body with Cutout for REX.

## ACCESSORIES & REPLACEMENT FOR MORTISE LOCKS

<b>FACEPLATE</b>	Storeroom or Deadbolt function in specified finishes.	<b>\$42</b>
<b>STRIKE</b>	4-7/8" ASA Strike in specified finishes	<b>\$42</b>
<b>CRU</b>	Current Reduction Unit	<b>\$37</b>
<b>4' LEAD</b>	Add 4' lead to any switch (per switch)	<b>\$35</b>
<b>BR1</b>	Bridge Rectifier w/ 12" Lead	<b>\$18</b>
<b>BR5</b>	Bridge Rectifier w/ 5' Lead	<b>\$30</b>
<b>QC</b>	8-pin or 12-pin Molex Connectors added to locking device retrofit ElectroLynx or Allegion Connect	<b>\$28</b>
<b>QC w/ lead</b>	8-pin or 12-pin Molex Connectors w/3-5' lead added to locking device retrofit ElectroLynx or Allegion Connect	<b>\$48</b>
<b>Door Cord QC</b>	3-5' Door Cord to connect a QC prepped locking device to the power transfer hinge	<b>\$85</b>
<b>SOL-ML</b>	Mortise Lock Replacement Solenoids (Specify brand, EU or EL & Voltage)	<b>\$88</b>

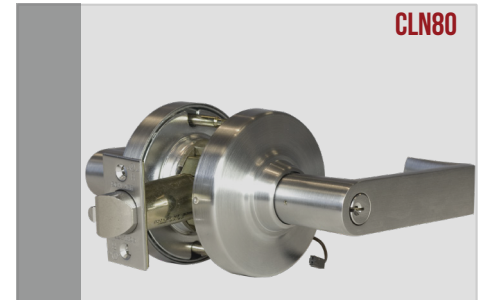
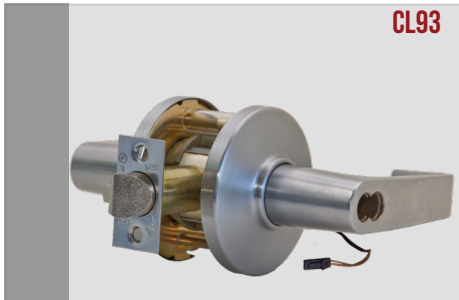
Allegion Connect® is a registered trademark of Allegion  
ElectroLynx® is a registered trademark of Assa Abloy

Micro-Fit 3.0™ Interconnect System available to retrofit common quick connection systems such as ElectroLynx® or Allegion Connect®.

www.commandaccess.com | US Customer Support 888.622.2377



# ELECTRIFIED CYLINDRICAL LOCK



## FEATURES

- EASY INSTALLATIONS - RELIABLE PERFORMANCE
- GRADE 1, ANSI RATED
- UL, CSA, CSFM LISTED
- QUICK TO SHIP & A FAIR PRICE
- BUILT IN THE USA - DURABLE & DEPENDABLE
- 3 YEAR WARRANTY ON ALL ELECTRICAL & MECHANICAL PARTS ALLOWS FOR REMOTE KEYLESS ACCESS & EGRESS CONTROL
- MULTIPLE FUNCTIONS AND VOLTAGES TO MEET YOUR REQUIREMENTS
- COMMON APPLICATIONS INCLUDE COMPUTER ROOMS, CLASSROOMS, INTERIOR IN SCHOOLS, HOSPITALS, OFFICES AND PUBLIC BUILDINGS
- CYLINDRICAL LOCKS CAN BE ORDERED COMPLETE OR MODIFICATION ONLY (OF CUSTOMER'S LOCK).



## FUNCTIONS

**STOREROOM** – Latchbolt retracted by key outside or lever inside. *Fail Secure* - Applied power allows outside lever to retract latchbolt (EU) or *Fail Safe* - prevents latchbolt from retracting (EL). Inside lever is always free for immediate egress.

**CLASSROOM** – Latchbolt retracted by key outside or lever inside. *Fail Secure* - Applied power allows outside lever to retract latchbolt (EU) or *Fail Safe* - prevents latchbolt from retracting (EL). Inside lever is always free for immediate egress. Outside lever can be maintained unlocked by key. Inside lever is always free for immediate egress.

**STOREROOM CLUTCHING** – Latchbolt retracted by key outside or lever inside. *Fail Secure* - Applied power allows outside lever to retract latchbolt (EU) or *Fail Safe* - prevents latchbolt from retracting (EL). Inside lever is always free for immediate egress. Outside lever is freewheeling (clutching) when locked. Inside lever is always free for immediate egress.

# HOW TO ORDER

 ALWAYS HERE TO HELP

## FOR MODIFICATION AND COMPLETE LOCKS

**PREFIX**  
MD - Modification

**MODEL + FUNCTION**  
Select a model number and add  
EL (Fail Safe) - Electronically Locked  
EU (Fail Secure) - Electronically Unlocked

**VOLTAGE**  
12 or 24 Volts must be specified  
Motorized = Universal Input 11-30V  
LE = Universal Input 11-30V

**OPTIONAL SWITCHES**  
REX - Request-to-Exit



### FOR CYLINDRICAL LOCK

- For Command Access & Schlage model #s only.
- Intelligent auto voltage sensing 11-30 VDC
  - Extremely low holding current = motorized
  - Field selectable EU/EL with flip of a switch

## FOR COMPLETE LOCKS ONLY

**TRIM**

 - Tubular  
 - Bent

 - Straight  
 - Curved

**FINISH** (BHMA std)

605 - Polished Bronze      625 - Polished Chrome  
613 - Oil Rubbed Bronze    626 - Satin Chrome

*SPECIAL ORDER*

606 - Satin Brass      612 - Satin Bronze

**KEYWAY**

SC - "C" Kwy Standard SFIC - Small Format I/C Prep  
LC - Less Cylinder      LFIC - Factory Large Format I/C Prep

**ACCESSORIES**

Strikes - 4-7/8" ASA Strike in specified finishes  
CRU2 - Current Reduction Unit (AC & DC input)  
4 Lead - 4' Wire Lead to switches  
10 Lead - 10' Wire lead to switches  
QC - Molex Connectors  
BR1 - Bridge Rectifier w/ 12" lead (included)  
BR5 - Bridge Rectifier w/ 5' lead

## EXAMPLES

### MODIFICATION ONLY

	PREFIX	MODEL	FUNCTION	SUFFIX	VOLTAGE	FINISH	KEYWAY	OPTIONS	ACC	COMPLETE PART #
Part #	MD	CL93D	EL	-	12	-	-	REX	CRU2	MDCL93D EL 12V REX CRU2
List \$	-	\$140	-	-	-	-	-	\$65	\$37	\$242

### COMPLETE LOCK

	PREFIX	MODEL	FUNCTION	SUFFIX	VOLTAGE	FINISH	KEYWAY	OPTIONS	ACC	COMPLETE PART #
Part #	-	CL190	EU	L17	-	626	SFIC	-	-	CL190 EU L17 626 SFIC
List \$	-	\$360	-	-	-	-	-	-	-	\$360

## QUICK REFERENCE

CL LOCK	PAGE	CL LOCK	PAGE
COMMAND CL1	16	ACCESSORIES	19
ARROW - CORBIN	17		
LSDA - SCHLAGE	18		




# ELECTRIFIED CYLINDRICAL LOCK

## COMMAND ACCESS CL1 SERIES

- UL LISTED
- RETROFITS SCHLAGE ND 80 PREP
- STANDARD 161 PREP
- FEATURES & PERFORMANCE FOUND IN DOMESTICALLY MADE ANSI GRADE 1 CYLINDRICAL LOCKS AT A SIGNIFICANTLY LOWER COST
- FIELD INSTALLABLE REX KIT AVAILABLE
- HIGHEST QUALITY MANUFACTURING BUILT TO LAST IN YORBA LINDA, CA



**MOTORIZED UNIVERSAL INPUT TAKES 11-30V & FIELD SELECTABLE EL/EU WITH FLIP OF SWITCH**

MODELS	LEVERS	FINISHES	CYLINDER
CL180 Solenoid Storeroom Clutching	L6 	605*	C
CL180LE Low Energy Storeroom Clutching		612*	SFIC
CL190 <i>Motorized</i> Storeroom Clutching	L7  L17 	613	LFIC
		625	
		626	

*Complete Example: CL190 EU L6 626 SFIC*

## COMMAND ACCESS COMPLETE LOCK

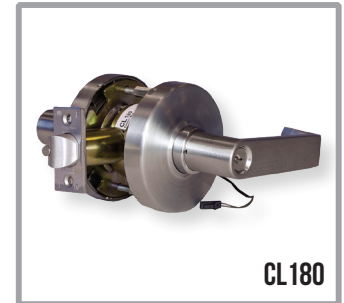
Specify Voltage. Typically Stocked Finishes - 605\*, 612\*, 613, 625, 626. 2-3/8" backset List \$35

FUNCTION	PART #	COM \$					626	625	613	LC	SC	SFIC	LFIC <sup>2</sup>	REX
STOREROOM	CL180EU/EL	\$326	-	L6	L7 <sup>3</sup>	L17	✓	✓	✓	-	✓	✓	✓	+\$65
LE STOREROOM <sup>1</sup>	CL180-LE EU/EL	\$401	-	L6	L7*	L17	✓	✓	✓	-	✓	✓	✓	✓
MOTOR STOREROOM <sup>1</sup>	CL190 EU/EL	\$360	-	L6	L7*	L17	✓	✓	✓	-	✓	✓	✓	+\$65

✓ or \$ = Available  
- = Not Available

1. Universal input 11-30V
  2. Available in L6 626 only
  3. Limited availability, please call to confirm stock.
- \*2-3/8" backset available list \$35





## ELECTRIFIED CYLINDRICAL LOCK

Specify EU or EL, Voltage and Handing.

✓ or \$ = Available  
= = Not Available

**ARROW** MODIFICATION ONLY (Customer's Arrow QL82 for clutching lever)  
Specify Voltage.

FUNCTION	PART #	COM \$	MD \$	4	4	4	4	626	625	613	LC	SC	SFIC	LFIC	REX
STOREROOM CLUTCH	CL878 EU	-	\$193	-	-	-	-	-	-	-	-	-	-	-	-
STOREROOM CLUTCH	CL878 EL	-	\$193	-	-	-	-	-	-	-	-	-	-	-	-

**BEST** MODIFICATION (Customer's Best 93K Series) / COMPLETE LOCK  
Specify Voltage. Typically Stocked Finishes - 626, C & D Roses Available

FUNCTION	PART #	COM \$	MD \$	4	4	4	4	626	625	613	LC	SC	SFIC	LFIC	REX
STOREROOM	CL93D EU/EL	\$683	\$140	-	15	-	14	✓	-	-	✓	✓	✓	-	+\$65

**CAL ROYAL** MODIFICATION (Customer's Cal Royal CGN05) / COMPLETE LOCK  
Specify Voltage. Typically Stocked Finishes - 613, 625, 626.

FUNCTION	PART #	COM \$	MD \$	4	4	4	4	626	625	613	L	SC	SFIC	LFIC	REX
STOREROOM CLUTCH	CLCR05 EU/EL	\$426	\$132	-	-	-	-	✓	✓	✓	✓	✓	✓	✓	+\$65

**CORBIN RUSSWIN** MODIFICATION (Customer's Corbin CL3357) / COMPLETE LOCK  
Specify Voltage. Typically Stocked Finishes - 613, 625, 626.

FUNCTION	PART #	COM \$	MD \$	4	4	4	4	626	625	613	LC	SC	SFIC	LFIC	REX
STOREROOM	CL05 EU	\$694	\$158	-	NZD	-	PZD	✓	-	-	✓	✓	-	✓	+\$65
STOREROOM	CL03 EL	\$694	\$158	-	NZD	-	PZD	✓	-	-	✓	✓	-	✓	+\$65

**LSDA** MODIFICATION ONLY (Customer's LSDA C5400 Grade One Lock)  
Specify Voltage.

FUNCTION	PART #	COM \$	MD \$	4	4	4	4	626	625	613	LC	SC	SFIC	LFIC	REX
STOREROOM CLUTCH	CLC5400 EU/EL	-	\$220	-	-	-	-	-	-	-	-	-	-	-	+\$65



# ELECTRIFIED CYLINDRICAL LOCK

## MARKS

MODIFICATION ONLY (Customer's Marks 195F)  
Specify Voltage.

✓ or \$ = Available  
- = Not Available

FUNCTION	PART #	COM \$	MD \$	ⓐ	ⓑ	ⓒ	ⓓ	626	625	613	LC	SC	SFIC	LFIC	REX
STOREROOM	CLF95 EU/EL	-	\$165	-	-	-	-	-	-	-	-	-	-	-	+\$65

## SARGENT

MODIFICATION (Customer's Sargent 10G04) / COMPLETE LOCK  
Specify Voltage. Typically Stocked Finishes - 613, 625, 626. Call for availability.

FUNCTION	PART #	COM \$	MD \$	ⓐ	ⓑ	ⓒ	ⓓ	626	625	613	LC	SC	SFIC	LFIC	REX
STOREROOM	CL371 EU	\$694	\$143	-	-	-	-	✓	-	-	✓	✓	-	✓	+\$65
STOREROOM	CL370 EL	\$694	\$143	-	-	-	-	✓	-	-	✓	✓	-	✓	+\$65

## SCHLAGE

MODIFICATION (Customer's Schlage ND12PD, ND70PD, ND80PD, ND94PD, ND96PD) / COMPLETE LOCK  
Specify Voltage. Typically Stocked Finishes - 613, 625, 626. Classic 'C' type keyway comes standard.

FUNCTION	PART #	COM \$	MD \$	ⓐ	ⓑ	ⓒ	ⓓ	626	625	613	LC	SC	SFIC/BD	LFIC/JD	REX
EXIT	CLN12 EU/EL	\$720	\$120	-	RHO	ATH*	SPA	✓	✓	+\$33	-	-	-	-	+\$65
CLASSROOM	CLN70 EU/EL	\$786	\$120	-	RHO	ATH*	SPA	✓	✓	+\$33	✓	✓	+\$79	✓	+\$65
STOREROOM	CLN80 EU/EL	\$786	\$120	-	RHO	ATH*	SPA	✓	✓	+\$33	✓	✓	+\$79	✓	+\$65
STOREROOM CLUTCH	CLN96 EU/EL	\$798	\$128	-	RHO	ATH*	SPA	✓	✓	+\$33	✓	✓	+\$79	✓	+\$65

Add \$35 list for Schlage original C & Everest C123.  
Add \$15 list for Control key..  
Add \$70 List net for RD & TD (No upcharge for JD).

\*Athens Handle Style Only Available in PD - 626



**NEED A LOCKING HARDWARE POWER SUPPLY? PG 42**



# ACCESSORIES

ALWAYS HERE TO HELP

Command Access current reduction unit is recommended for “fail safe” or “unlock cycle” applications to reduce heat and extend solenoid life meaning no more “hot levers”!

**CRU2** - Adjusts incoming voltage to maximize the efficiency of our 12 or 24VDC locks.



VC Series

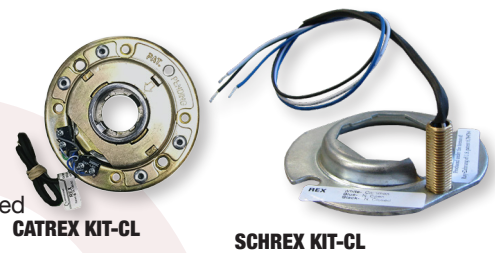
**VC Series** - Voltage converter takes incoming voltage and steps down to out put clean & consistent 12VDC or 24VDC to power any locking device, reader & more.

## CYLINDRICAL LOCK SWITCH OPTIONS

All Command Access modified cylindrical lever locks are available with REX monitor switches. All switches are SPDT (single pull, double throw) and either mechanical or reed type. With the exception of a few field installable REX kits, all other REX switches must be installed at the factory. Here is a list of available switches and their definition.

REX - Request to Exit or AE switch available (depending on manufacturer) - sends a signal to alert the control panel that the door is about to be opened by someone intending to exit from within the secured area

REXKIT-CL - Field Installable REX (Request to Exit ) switch kits are available for a few cylindrical locks. Each kit includes the switch assembly and all necessary items needed for quick field installation.



CATREX KIT-CL

SCHREX KIT-CL

## ACCESSORIES & REPLACEMENT FOR CYLINDRICAL LOCKS

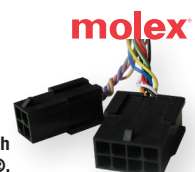
CATREXKIT-CL	REX (Request to Exit) installed on CAT CL1 spring cage field installable) kit.	\$77
SCHREXKIT-CL	Schlage ND series Anti-Rotation Plate with Request to Exit (REX) switch installed	\$77
REX	Request to Exit (REX) switch installed installed on cylindrical lock	\$65

## ACCESSORIES & REPLACEMENT FOR CLYLINDRICAL LOCKS

STRIKE	Standard ASA Strike in specified finishes	\$42
CRU	Current Reduction Unit	\$37
4' LEAD	Add 4' lead to any switch (per switch)	\$35
BR1	Bridge Rectifier w/ 12" Lead	\$18
BR5	Bridge Rectifier w/ 5' Lead	\$30
QC	8-pin or 12-pin Molex Connectors added to locking device retrofit ElectroLynx or Allegion Connect	\$28
QC w/ lead	8-pin or 12-pin Molex Connectors w/3-5' lead added to locking device retrofit ElectroLynx or Allegion Connect	\$48
Door Cord QC	3-5' Door Cord to connect a QC prepped locking device to the power transfer hinge	\$85
SOL-CL	Cylindrical Lock Replacement Solenoids (Specify brand, EU or EL & Voltage) Factory replacement only	\$88

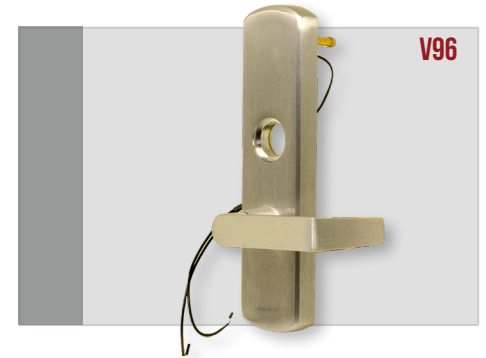
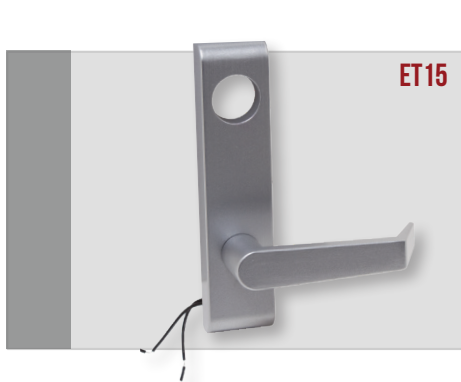
Allegion Connect® is a registered trademark of Allegion  
ElectroLynx® is a registered trademark of Assa Abloy

Micro-Fit 3.0™ Interconnect System available to retrofit common quick connection systems such as ElectroLynx® or Allegion Connect®.





# ELECTRIFIED EXIT TRIM



## SPECIFICATIONS

- ELECTRIC LOCKING OR UNLOCKING BY A REMOTE SWITCH
- INTERIOR OR EXTERIOR ENTRANCE (INGRESS) WITH MECHANICAL EXIT DEVICE
- WHERE FIRE/LIFE SAFETY CODES REQUIRE A “FAIL SAFE” CONDITION
- STAIRWAY CONDITIONS SUPPLIED W/ PLUG-IN RECTIFIER SO THERE IS NO WORRY WHETHER YOU’RE USING AC OR DC VOLTAGE.
- LOW CURRENT DRAW . . . MULTIPLE LOCKS RUNNING OFF ONE POWER SUPPLY.
- ALL 12 OR 24 VOLT SOLENOIDS RATED FOR CONTINUOUS DUTY . . . WHETHER YOU’RE POWERING FOR 5 SECONDS OR 8 HOURS.
- REE SWITCH AVAILABLE ON MOST MODELS
- AVAILABLE IN EL (FAIL SAFE) OR EU (FAIL SECURE)
- 3 YEAR “NO HASSLE” WARRANTY ISSUES RELIABILITY TO THE OWNER



## FUNCTIONS

**STOREROOM (EU) -** *Fail Secure* Latchbolt retracted by key outside or lever inside. Applied power allows outside lever to retract latchbolt. Inside lever is always free for immediate egress. Inside push pad is always free for immediate egress.

**STOREROOM (EL) -** *Fail Safe* Latchbolt retracted by key outside or lever inside. Applied power prevents latchbolt from retracting. Inside lever is always free for immediate egress. Inside push pad is always free for immediate egress.

## EXIT TRIM SWITCH OPTIONS

\* Most Command Access electrified/modified exit trims are available with an REE (Request to Enter) switch. This switch is a SPDT (single pull, double throw) switch that sends a signal to alert the control panel that the door is about to be opened by someone intending on entering a secured area. This switch must be installed at the factory.

# HOW TO ORDER

 ALWAYS HERE TO HELP

## FOR MODIFICATION AND COMPLETE TRIM

**PREFIX**  
MD - Modification

**MODEL + FUNCTION**  
Select a model number and add  
EL (Fail Safe) - Electronically Locked  
EU (Fail Secure) - Electronically Unlocked

**VOLTAGE**  
12 or 24 Volts must be specified  
Motorized = Universal Input 11-30V  
LE = Universal Input 11-30V

**OPTIONAL SWITCHES**  
REE-Request-to-Enter

## FOR COMPLETE TRIM ONLY

**TRIM**

 - Tubular       - Straight  
 - Bent               - Curved

**FINISH** (BHMA std)  
626 - Satin Chrome  
SPECIAL ORDER  
613 - Oil Rubbed Bronze      625 - Polished Chrome

**KEYWAY**  
Only ET15/25 have cylinder provided.  
Rim Cylinder - "C" Standard  
LC - Less Cylinder

**ACCESSORIES**  
CRU2 - Current Reduction Unit (AC & DC input)  
4 Lead - 4' Wire Lead to switches  
10 Lead - 10' Wire lead to switches  
QC - Molex Connectors  
BR5 - Bridge Rectifier w/ 5' lead

## EXAMPLES

### MODIFICATION ONLY

	PREFIX	MODEL	FUNCTION	SUFFIX	VOLTAGE	FINISH	KEYWAY	OPTIONS	ACC	COMPLETE PART #
Part #	MD	CR22	EL	-	12	-	-	-	CRU2	MDCR22 EL CRU2
List \$	-	\$225	-	-	-	-	-	-	\$37	\$262

### COMPLETE EXIT TRIM

	PREFIX	MODEL	FUNCTION	SUFFIX	VOLTAGE	FINISH	KEYWAY	OPTIONS	ACC	COMPLETE PART #
Part #	-	V96	EU	06	-	626	-	REE	-	V96 EU 06 24V 626 REE
List \$	-	\$896	-	-	-	-	-	\$65	-	\$961

## QUICK REFERENCE

EXIT TRIM	PAGE	EXIT TRIM	PAGE	EXIT TRIM	PAGE
COMMAND ET15/16	22	FALCON	24	SARGENT	24
COMMAND ET25/26	23	HAGER	24	VON DUPRIN	24
CAL ROYAL	24	PRECISION	24	ACCESSORIES	25



# ELECTRIFIED EXIT TRIM



## COMMAND ACCESS ET15/16 SERIES

Works with Command Access PD15/16, Jackson 1285/95, & AHT 8000/9000 series

- FIELD REVERSIBLE HANDING
- PERFECT FOR APPLICATIONS WHERE LATCH RETRACTION OF THE EXIT DEVICE'S LATCHBOLT(S) IS COST PROHIBITIVE OR NOT REQUIRED.
- HIGHEST QUALITY MANUFACTURING BUILT TO LAST IN YORBA LINDA, CA
- ELECTRIC LOCKING OR UNLOCKING BY A REMOTE SWITCH
- INTERIOR OR EXTERIOR ENTRANCE (INGRESS) WITH MECHANICAL EXIT DEVICE
- IDEAL WHERE FIRE/LIFE SAFETY CODES REQUIRE A "FAIL SAFE" CONDITION
- STAIRWAY CONDITIONS
- NO NEED FOR EXPENSIVE POWER SUPPLY

### MODELS

### FUNCTION

### LEVERS

### FINISHES

### DIMENSIONS

- ET15 RIM EU/EL ELECTRIFIED STOREROOM w/ Key Override
- ET15 CVR EU/EL ELECTRIFIED STOREROOM w/ Key Override



628  
313

Diameter  
1-3/4" x 7-7/16"

#### Mechanical

- ET16 RIM ENTRANCE
- ET16 CVR ENTRANCE
- ET22 ELT ENTRANCE
- ET22 SLT STOREROOM
- ET22 PLT PASSAGE
- ET22 DLT DUMMY

Complete Example: ET15 RIM EU L6 12V 628



### ET15

PART #	COMPLETE LOCK List \$		628	313	C	Request to Enter (REE)
--------	-----------------------	--	-----	-----	---	------------------------

ET15/16 for: Command Access PD15 Jackson 1285/95 AHT 8000/9000

ET15RIM EU/EL	\$450	L6	✓	✓	✓	+\$65
ET15CVR EU/EL	\$450	L6	✓	✓	✓	+\$65
ET16 RIM	\$241	L6	✓	✓	✓	+\$65
ET16 CVR	\$241	L6	✓	✓	✓	+\$65

Specify EU or EL, Voltage and Handing.

## COMMAND ACCESS ET22 SERIES

Works with Command Access PD21/22 series

### ET22

PART #	COMPLETE LOCK List \$		630	313	C
--------	-----------------------	--	-----	-----	---

ET22 for: Command Access PD21/22 series



ET22ELT	\$585	L6	✓	-	✓
ET22SLT	\$585	L6	✓	-	✓
ET22PLT	\$555	L6	✓	-	✓
ET22DLT	\$555	L6	✓	-	✓

# COMMAND ACCESS ET25/26 SERIES

Works with Command Access PD25/26, Cal Royal 7700 R/SVR, & Von Duprin 98/99 R/V series

- FIELD SELECTABLE EU/EL & FIELD REVERSIBLE HANDING
- PERFECT FOR APPLICATIONS WHERE LATCH RETRACTION OF THE EXIT DEVICE'S LATCHBOLT(S) IS COST PROHIBITIVE OR NOT REQUIRED.
- HIGHEST QUALITY MANUFACTURING BUILT TO LAST IN YORBA LINDA, CA
- ELECTRIC LOCKING OR UNLOCKING BY A REMOTE SWITCH
- INTERIOR OR EXTERIOR ENTRANCE (INGRESS) WITH MECHANICAL EXIT DEVICE
- IDEAL WHERE FIRE/LIFE SAFETY CODES REQUIRE A "FAIL SAFE" CONDITION STAIRWAY CONDITIONS
- NO NEED FOR EXPENSIVE POWER SUPPLY
- LOW ENERGY AVAILABLE 11-30V OPTION





MODELS	FUNCTION	LEVERS	FINISHES	DIMENSIONS
ET25 EU/EL	ELECTRIFIED STOREROOM w/ Key Override		626	Diameter 2-3/4" x 10-1/4"
<i>Mechanical</i>				
ET26 ELT	ENTRANCE LEVER TRIM	 L6		
ET26 SLT	STOREROOM LEVER TRIM			
ET26 PLT	PASSAGE LEVER TRIM			
ET26 DLT	DUMMY LEVER TRIM	 L17		
ET26 NPT	MECHANICAL NIGHT LATCH PULL TRIM			
ET26 DPT	DUMMY PULL TRIM			

Complete Example: ET25 EU L6 626

## COMMAND ACCESS ET25

Specify EU or EL and Handing.

PART #	COMPLETE LOCK List \$			626	613	*C	Request to Enter (REE)
--------	-----------------------	---	---	-----	-----	----	------------------------

ET25/26 for: Von Duprin 98/99 Command Access PD25 Cal-Royal 77

Model	List Price	L6	L17	626	613	*C	REE
ET25 EU/EL	\$470			✓	+\$30	✓	+\$65
ET25-LE EU/EL	\$540				+\$30		+\$65
ET26 ELT	\$280			✓	+\$30	✓	+\$65
ET26 SLT	\$280			✓	+\$30	✓	+\$65
ET26 PLT	\$280			✓	+\$30	-	+\$65
ET26 DLT	\$280			✓	+\$30	-	-
ET26 NPT	\$166	-	-	✓	+\$30	✓	-
ET26 DPT	\$166	-	-	✓	+\$30	-	-

\*IC CORES AVAILABLE - CALL FACTORY





# ELECTRIFIED EXIT TRIM



## ELECTRIFIED OUTSIDE EXIT TRIMS

Specify EU or EL, Voltage and Handing.

✓ or \$ = Available  
- = Not Available

PART #	EXIT TRIM	COMPLETE LOCK List \$	MODIFICATION ONLY List \$ (add prefix MD)			626	LC	MAINTAIN KEY OVERRIDE	Request to Enter (REE)
CR22E U/EL	CAL ROYAL NESC 2200 R/SVR SERIES	-	\$225	-	-	-	-	✓	-
CR77 EU/EL	CAL ROYAL NESC 7700 R/SVR SERIES	-	\$225	-	-	-	-	✓	+\$65
CR98E U/EL	CAL ROYAL NESC 9800 R/SVR SERIES	-	\$225	-	-	-	-	✓	-
FAL581EU/51EL	FALCON 510 SERIES	-	\$225	-	-	-	-	✓	+\$65
H45CE EU/EL	HAGER 45CE SERIES	-	\$225	-	-	-	-	✓	-
PH49EU/EL*	PRECISION 4900 SERIES	-	\$518	-	-	-	-	-	-
SGT700EU/EL	SARGENT 713 SERIES	-	\$265	-	-	-	-	✓	+\$65
V23EU/EL	VON DUPRIN 230L SERIES	\$696	\$193	06	-	✓	✓	✓	-
V36EU/EL*	VON DUPRIN 360L/BE/T SERIES	-	\$518	-	-	-	-	-	-
V37EU/EL	VON DUPRIN 370L SERIES	-	\$518	-	-	-	-	✓	-
V96EU/EL	VON DUPRIN 996L R/V & M SERIES	\$896	\$193	06	17	✓	✓	✓	+\$65

Note: V36 & MDPH49 do not maintain key override- A dummy cylinder will be added to all cylinder prep trims.



# ACCESSORIES



## NOTES

---

---

---

---

---

---

---

---

---

---

---

---

---

---

---

---

---

---

---

---

---

---

---

---

---

### ACCESSORIES & REPLACEMENTS FOR EXIT TRIM

VDREEKIT-ET	Field installable Request to Enter kit for the Von Duprin 996L Series	\$77
SGTREEKIT-ET	Field installable Request to Enter kit for the Sargent 713 Series	\$77
CRU	Current Reduction Unit	\$37
4' LEAD	Add 4' lead to any switch (per switch)	\$35
10' LEAD	Add 10' lead to any switch (per switch)	\$36
BR5	Bridge Rectifier w/ 5' Lead	\$30
QC or CON	8-pin or 12-pin Molex Connectors added to locking device retrofit ElectroLynx or Allegion Connect	\$28
QC or CON w/ lead	8-pin or 12-pin Molex Connectors w/3-5' lead added to locking device retrofit ElectroLynx or Allegion Connect	\$48
Door Cord QC or CON	3-5' Door Cord to connect a QC prepped locking device to the power transfer hinge	\$85
SOL-ET	Exit Trim Lock Replacement Solenoids (Specify brand, EU or EL & Voltage) - Call Factory to confirm field swap is available	\$88

\* Please call to confirm replacement solenoid can be replaced in the field  
 Allegion Connect® is a registered trademark of Allegion  
 ElectroLynx® is a registered trademark of Assa Abloy



Micro-Fit 3.0™ Interconnect System available to retrofit common quick connection systems such as ElectroLynx® or Allegion Connect®.

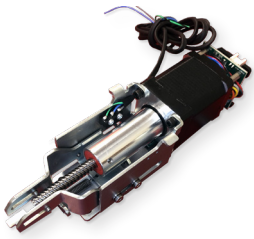


**NEED A LOCKING HARDWARE POWER SUPPLY? PG 42**



# MOTORIZED LATCH RETRACTION

THE FASTER, QUIETER, POWER EFFICIENT SOLUTION

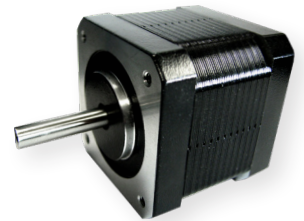


Command Access has applied our continuous improvement mindset to our motorized latch retraction for over ten years, taking our MLRK1 series to a new level that allows for a fast, quiet, smooth, and consistent latch retraction. Each motor assembly is designed specifically for each manufacturer's device, rather than a "one size fits all" approach. Many are available with an optional built-in request to exit switches to save time & money on the installation.



In addition, we offer our IMPROVED motor module with audible diagnostics & true electronic dogging & our patent-pending "PTS" push-to-set technology.

Our motor module will let you know whether your kit is getting over or under-voltage, hits a mechanical obstruction & more. True electronic dogging is ideal for visually matching mechanical dogging so customers can see whether the door is unlocked or not, reducing mechanical wear & noisy depression of the push pad when in the open state. If the push pad is pulled from the electronically dogged state, our anti-tampering feature automatically re-engages at set time intervals, reducing service calls. Here is what's great about our "PTS" technology. While we aim to set every exit device correctly at the factory before shipping, we cannot account for every condition of every door opening in the field. Instead of our customers having to make several trips out to a job site to re-adjust an exit device, the device is now adjustable at the door by virtually anyone with a credential. Here's how "PTS" works in three easy steps;



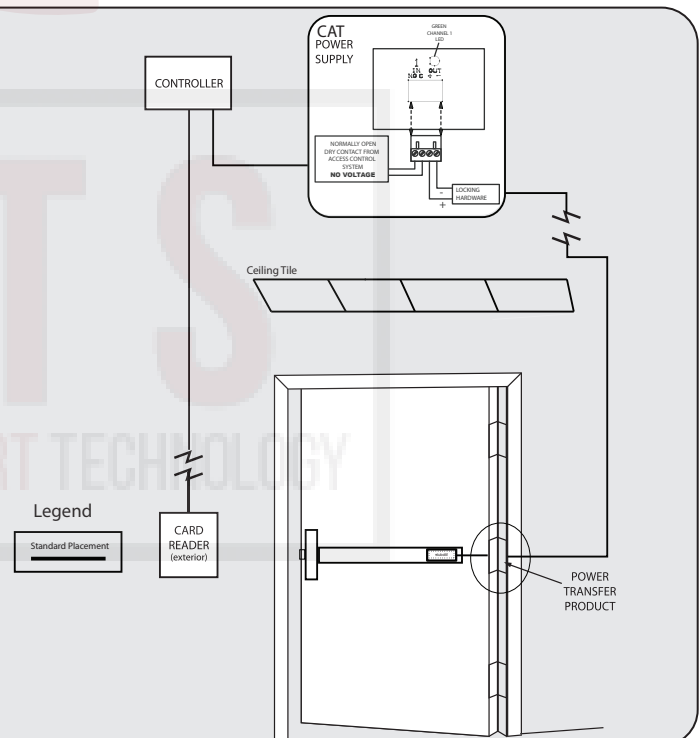
- **Step 1 – To enter PTS mode: Depress MM5 button & apply power. The device will emit 1 SHORT beep. The device is now in programming mode.**
- **Step 2 – while depressing the push pad, activate the device. (i.e. presenting the credential to the reader)**
- **Step 3 - continue to keep pad depressed, the device will emit 1 LONG beep. After the beep has stopped, release the push pad & now adjustment is complete. If not to your liking repeat the three steps.**

## TYPICAL LATCH RETRACTION INSTALLATION FLOW CHART

A typical Command Access latch retraction device installation includes the device, the power transfer, and a power supply. The access control company integrates their card reader and controller to send a signal to the power supply that in turn unlocks the device (see example to the right). More advanced installations additionally incorporate auto operators and palm buttons for ADA/Barrier Free and hospital applications (see page 9 for an installation flow example).

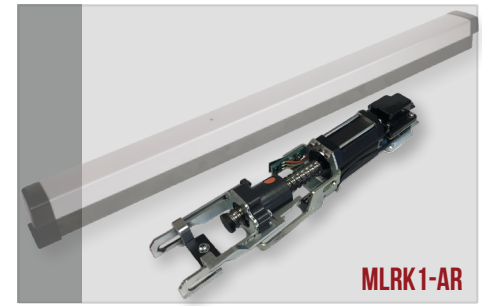
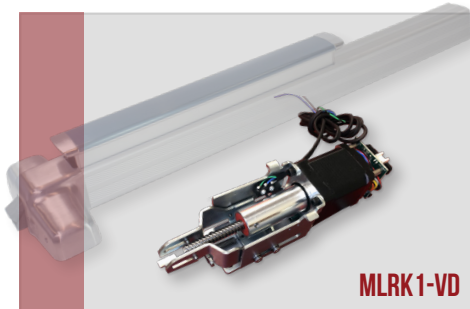
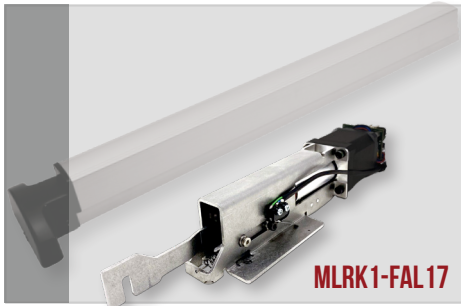
### APPLICATIONS INCLUDE:

- Hospital entrances and hallways
- Universities and institutions
- ADA compliance
- Barrier Free compliance





# ELECTRIFIED LATCH RETRACTION KITS



- UL LISTED
- OPTIONAL REX ADD-ON
- QUICK & EASY INSTALLS WITH STEP BY STEP VIDEOS TO HELP
- WE'VE TESTED OUR LATCH RETRACTION DEVICES TO OVER A MILLION CYCLES!
- LONG WIRE RUNS WITH 18/2 WIRE TO POWER SUPPLY, SAVES COST.
- LOW CURRENT DRAW - MOTORIZED ~1.0 AMP
- 8' POWER CABLE + MOLEX PIGTAIL QUICK CONNECT
- 3-YEAR "NO HASSLE" WARRANTY ISSUES RELIABILITY TO THE OWNER

## SPECIFICATIONS

**MOTORS** - Motor driven drive pulls back the exit device latch/latches from the locked position.

- Fast, quiet and smooth operation - You'll feel the difference!
- MM module is compatible with most 24VDC, 1A (or greater) regulated & filtered power supplies
- Electric dogging - Full push-pad retraction - Quieter operation in electronically dogged state.
- Push to Set "PTS" technology for easy post-installation electronic adjustment.
- Vandal Resistance - If push pad is pulled from open position, motor will re-set itself & pull back the latch without fail
- Adjustment screw for easy Electronic latchbolt adjusting.
- On-board audible self diagnostics for fast & easy troubleshooting at the opening.

*When retrofitting our MLRK1 kit onto a device over 10 years old, please call factory for compatibility.*

## FUNCTIONS

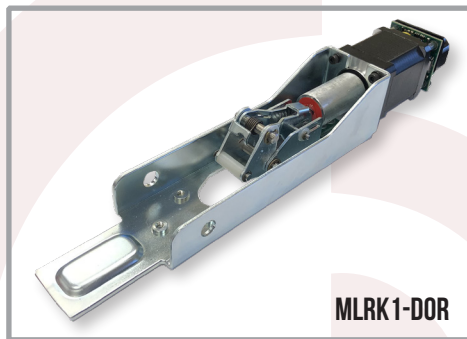
**EU (FAIL SECURE)** - Exit device latch(es) retracted with switched power allowing for outside access or auto operator integration. Without power, the device and latch(es) are secured (locked). Inside push pad always allows for free egress.



# ELECTRIFIED LATCH RETRACTION KITS

## HOW TO ORDER

	MODEL	FUNCTION	VOLTAGE	OPTIONS		COMPLETE PART #
Part #	MLRK1-VD	EU	24V	REX	→	MLRK1-VD
List \$	\$545	-	-	N/C	→	\$545
Part #	MLRK1-AR	EU	24V	REX		MLRK1-AR REX
List \$	\$545	-	-	\$65		\$610



## MOTORIZED LATCH RETRACTION KITS

Kits work on all style devices: RIM, SVR, CVR, & Mortise.



✓ or \$ = Available  
- = Not Available

PART #	OLD PART #	EXIT DEVICE	LIST	BUILT-IN	REXKIT
				REX	AVAILABLE <sup>1</sup>
MLRK1-AR	ARLP-UL-M-KIT	ADAMS RITE 82/84/86/88 SERIES	\$545	+\$65	\$77
MLRK1-AREX	EXARLP-UL-M-KIT	ADAMS RITE EX SERIES	\$545	+\$65	\$77
MLRK1-ARW	-	Arrow 1000 series	\$545	-	\$77
MLRK1-CAL	CRLP98-UL-M-KIT	CAL ROYAL 22 & 98 SERIES	\$545	-	\$77
MLRK1-CAL77	CRLP77-UL-M-KIT	Cal Royal 7700 series	\$545	+\$65	-
MLRK1-COR	CYLP-UL-M-KIT	CORBIN RUSSWIN 4000/5000	\$545	+\$65	\$77
MLRK1-MRK	-	Design Hardware 1000	\$545	+\$65	\$77
MLRK1-DRX	CRLP98-UL-M-KIT	DOREX 9500 SERIES	\$545	-	\$77
MLRK1-DOR	DLP-UL-M-KIT	DORMA 9000 SERIES	\$545	-	\$77
MLRK1-FAL17	PD10-UL-M-KIT	Falcon 16/17 & First Choice 36/37 Series	\$545	✓	\$77
MLRK1-FAL25	FLP-UL-M-KIT	Falcon 24/25 series	\$545	✓	\$77
MLRK1-HAG	LLP-UL-M-KIT	Hager 4500/4600 series	\$545	+\$65	\$77

1. See page 37 for REXKIT's available & part #. Order REX Kit separately.



✓ or \$ = Available  
- = Not Available

PART #	OLD PART #	EXIT DEVICE	LIST	BUILT-IN	REXKIT
				REX	AVAILABLE <sup>1</sup>
MLRK1-JAC12	PD15-UL-M-KIT	Jackson 1285/1295 SERIES	\$545	+\$65	\$77
MLRK1-JAC12	PD15-UL-M-KIT	Kawneer 1686/1786 SERIES	\$545	+\$65	\$77
MLRK1-KAWP	-	Kawneer Paneline SERIES	\$575	+\$65	\$77
MLRK1-MRK	MLP-UL-M-KIT	Marks M9900 SERIES	\$545	+\$65	\$77
MLRK1-MRK8	MLP-UL-M-KIT	Marks M8800 SERIES	\$545	+\$65	\$77
MLRK1-PDQ	-	PDQ 6200 SERIES	\$545	+\$65	\$77
MLRK1-PHI	EDLP1-UL-M-KIT	PHILADELPHIA HARDWARE 9000 SERIES	\$545	+\$65	\$77
MLRK1-TEL	EDLP1-UL-M-KIT	TELL 9500 SERIES	\$545	+\$65	\$77
MLRK1-TS	EDLP1-UL-M-KIT	Townsteel 1000 SERIES	\$545	+\$65	\$77
MLRK1-SGT	SLP-UL-M-KIT	Sargent 80 SERIES	\$545	-	\$77
MLRK1-SQ	-	Stanley QED 100/200	\$545	-	\$77
MLRK1-VD22	VLP22-UL-M-KIT	Von Duprin 22 SERIES	\$545	✓	\$77
MLRK1-VD	VLP-UL-M-KIT	Von Duprin 33/35 & 98/99 SERIES	\$545	✓	\$77
MLRK1-COR	CYLP-UL-M-KIT	YALE 7000 SERIES	\$545	+\$65	\$77
MLRK1-YAL6	-	YALE 6000 SERIES	\$545	+\$65	\$77

1. See page 37 for REXKIT's available & part #. Order REX Kit separately.

## SOLENOID LATCH RETRACTION KITS

PART #	EXIT DEVICE	LIST	REXKIT
			AVAILABLE
ARLP88-KIT	Adams Rite 8800 series	\$220	+\$77
VLP-UL-KIT	Von Duprin 33/35 & 98/99 series	\$445	+\$77



**NEED A LOCKING HARDWARE POWER SUPPLY? PG 42**



# ELECTRIFIED LATCH RETRACTION KITS

## QUICK REFERENCE

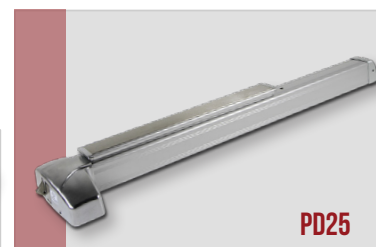
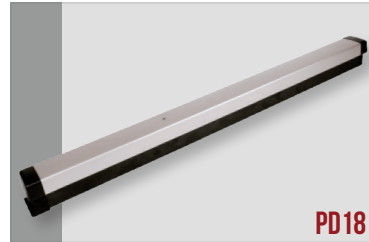
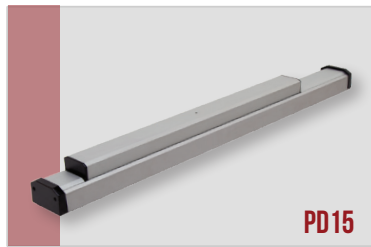
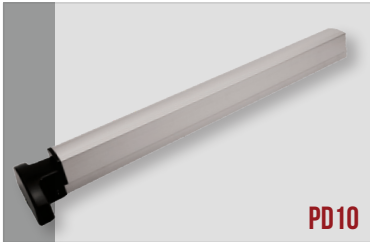
EXIT DEVICE	CAT NEW PART #	CAT OLD PART #	OEM	ACSI	SDC
ADAMS RITE 82/84/86/88 SERIES	MLRK1-AR	ARLP-UL-M-KIT	SE <sup>1</sup>	-	LR100-ARK
ADAMS RITE EX SERIES	MLRK1-AREX	EXARLP-UL-M-KIT	-	-	-
Arrow 1000 series	MLRK1-ARW	-	-	-	LR1000-AWK
CAL ROYAL 22 & 98 SERIES	MLRK1-CAL	CRLP98-UL-M-KIT	FLR2298 KIT	-	LR100-CAK-EM
Cal Royal 7700 series	MLRK1-CAL77	CRLP77-UL-M-KIT	FLR7700 KIT	-	LR100-CAK
CORBIN RUSSWIN 4000/5000	MLRK1-COR	CYLP-UL-M-KIT	MELR <sup>2</sup>	1550K-MDC	LR1000-CRK
Design Hardware 1000	MLRK1-MRK	-	ELR <sup>1</sup>	1550K-MDH	LR100-DHK
DOREX 9500 SERIES	MLRK1-DRX	CRLP98-UL-M-KIT	-	-	-
DORMA 9000 SERIES	MLRK1-DOR	DLP-UL-M-KIT	MLR <sup>1</sup>	1550K-MDD	LR100-DAK
Falcon 16/17 SERIES	MLRK1-FAL17	PD10-UL-M-KIT	EL <sup>3</sup>	1550K-MDO	LR100-FAK
Falcon 24/25 SERIES	MLRK1-FAL25	FLP-UL-M-KIT	MELK <sup>2</sup>	1500K-MDF	LR100-FRK
First Choice 36/37 Series	MLRK1-FAL17	PD10-UL-M-KIT	MEL3000-1	1550K-MDO	LR100-FCK
Hager 4500 series	MLRK1-HAG	LLP-UL-M-KIT	MLR	1550K-MDT	LR100-HK
Jackson 1285/1295	MLRK1-JAC12	PD15-UL-M-KIT	-	-	-
Kawneer 1686/1786	MLRK1-JAC12	PD15-UL-M-KIT	MEL <sup>1</sup>	-	-
Kawneer Paneline	MLRK1-KAWP	-	MEL <sup>1</sup>	-	-
Marks M9900	MLRK1-MRK	MLP-UL-M-KIT	ER <sup>1</sup>	-	LR100-MDK
Marks M8800	MLRK1-MRK8	MLP-UL-M-KIT	-	-	-
PDQ 6200 series	MLRK1-PDQ	-	81550K-MDT	-	LR100-PDQK
PHILADELPHIA HARDWARE 9000 SERIES	MLRK1-PHI	EDLP1-UL-M-KIT	N/A	-	-
TELL 9500 SERIES	MLRK1-TEL	EDLP1-UL-M-KIT	-	-	LR100-TEK
Townsteel 1000 series	MLRK1-TS	EDLP2-UL-M-KIT	ELR <sup>3</sup>	-	LR100-TSK
Sargent 80 series	MLRK1-SGT	SLP-UL-M-KIT	M56 Kit	1550K-MDS	LR100-SGK
Stanley QED 100/200	MLRK1-SQ	-	LR <sup>3</sup>	-	LR100-K2K
Von Duprin 22 series	MLRK1-VD22	VLP22-UL-M-KIT	-	1550K-MDV22	LR100-VD22
Von Duprin 33/35 & 98/99 series	MLRK1-VD	VLP-UL-M-KIT	QEL KIT	1550K-MVD	LR100-VDK
Yale 7000 Series	MRK1-COR	CYLP-UL-M-KIT	P <sup>3</sup>	1550K-MDC	LR100-YDK
Yale 6000 Series	MLRK1-YAL6	-	P <sup>3</sup>	-	-

1. Not available as a field installable kit, Factory modification only.
2. Need to order whole baserail replacement for retrofitting.
3. No motorized latch retraction option, only high in-rush solenoid latch retraction.





# ELECTRIFIED EXIT DEVICES



- **STOREFRONT & ARCHITECTURAL EXIT DEVICES ALLOW FOR REMOTE KEYLESS ACCESS CONTROL IN HIGH OCCUPANCY/HIGH TRAFFIC CONDITIONS**
- **COMMON APPLICATIONS INCLUDE CONDITIONS SUCH AS HOSPITALS, AIRPORTS, SCHOOLS, CHURCHES, AND AUTOMATIC DOOR OPERATORS**
- **WE STOCK MANY TYPES OF COMMAND ACCESS & OTHER MANUFACTURER'S EXIT DEVICES.**
- **3-YEAR "NO HASSLE" WARRANTY ISSUES RELIABILITY TO THE OWNER**



## SPECIFICATIONS

**MOTORS** - Motor driven drive pulls back the exit device latch/latches from the locked position.

- Fast, quiet and smooth operation - You'll feel the difference
- MM module is compatible with most 24VDC, 1A (or greater) regulated & filtered power supplies
- Electric dogging - Full push-pad retraction
- "PTS" Electronic adjustment for latchbolt travel.
- If push pad is pulled from open position, motor will re-set itself & pull back the latch without fail
- Adjustment screw for easy Electronic latchbolt adjusting.
- On-board audible self diagnostics for fast & easy troubleshooting at the opening.

**SOLENOIDS** - Solenoid driven drive pulls back the exit device latch/latches from the locked position.

- Extended duration latch pullback capability for "continuously on conditions"
- Up to 500' wire run with 18/2 wire to power supply, saves cost.

## TYPES

**RIM** - Rim type exit device with surface mounted push pad and one point latching.

**CVR** - Concealed Vertical Rod type exit device with surface mounted push pad and two-point locking.

**SVR** - Surface Vertical Rod type exit device with surface mounted push pad and two-point latching.

## FUNCTIONS

**LPEU (FAIL SECURE)** - Exit device latch(es) retracted with switched power allowing for outside access or auto operator integration. Without power, the device and latch(es) are secured (locked). Inside push pad always allows for free egress.



# HOW TO ORDER

ALWAYS HERE TO HELP

## FOR MODIFICATION AND COMPLETE DEVICE

**PREFIX**  
MD - Modification

**MODEL + FUNCTION**  
Select a model number and add EU (Fail Secure)  
- Electronically Unlocked only

**VOLTAGE**  
24 Volts  
12 Volts - Adams Rite 88 & PD18-RIM ONLY

**OPTIONAL SWITCHES**  
REX - Request-to-Exit  
LBM - Latchbolt Monitor

## FOR COMPLETE DEVICE ONLY

**SIZE (Width of device)**  
36 - 36" wide device  
42 - 42" wide device  
48 - 48" wide device

<b>ARCHITECTURAL</b>	<b>FINISH</b>	<b>STOREFRONT</b>
626 - Satin Chrome		628 - Aluminum
613 - Oil Rubbed Bronze		313 - Duronatic

**ACCESSORIES**  
3' Lead - 3' Wire Lead w/ connector(s)  
4' Lead - 4' Wire Lead w/ connector(s)  
QC - Molex Connectors

## EXAMPLES

### MODIFICATION ONLY - SOLENOID DRIVEN

KEY: MD = MODIFICATION  
M = MOTOR DRIVEN

	PREFIX	MODEL	SUFFIX	FUNCTION	VOLTAGE	SIZE	FINISH	OPTIONS	COMPLETE PART #
Part #	MD	MDARLP86	-	EU	24V	-	-	REX	MDARLP86-EU-24V REX
List \$	-	\$440	-	-	-	-	-	\$65	\$505

### COMPLETE MOTOR DRIVEN DEVICE

	PREFIX	MODEL	SUFFIX	FUNCTION	VOLTAGE	SIZE	FINISH	OPTIONS	COMPLETE PART #
Part #	-	PD25	M	EU	24V	36	626	REX	PD25-M-RIM-36-626 REX
List \$	-	\$1192	-	-	-	-	-	\$65	\$1257

## QUICK REFERENCE

EXIT DEVICE	PAGE	EXIT DEVICE	PAGE	EXIT DEVICE	PAGE
COMMAND PD10/11	34	COMMAND PD22/23	35	ACCESSORIES	37
COMMAND PD15/16	34	COMMAND PD25/26	35		
COMMAND PD18/19	34	ADAMS RITE 86	36		



# ELECTRIFIED EXIT DEVICES

## COMMAND ACCESS STOREFRONT SERIES

The Command Access PD10, PD15, & PD18 storefront exit devices our high quality, cost effective solutions for new and retrofit storefront applications. As a retrofit solution, both devices easily convert other manufacturers installation to a Command Access latch pullback application. We recommend hardware be removed and replaced with new hardware utilizing existing holes' when selling device.



### COMMAND ACCESS PD10 / PD11

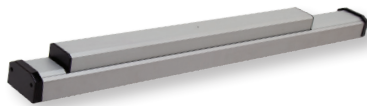
#### COMPLETE DEVICES

PD10 / PD11 Series retrofits Doromatic 1600/1700 & First Choice 3600/3700.

√ or \$ = Available  
- = Not Available

PART #	FUNCTION	LIST \$	36"	*42"	48"	ALUM	DURO	REX	LBM
PD10-M-RIM	Motorized Latch Retraction (EU)	\$835	✓	+\$64	+\$30	✓	+\$21	+\$65	+\$65
PD10-M-CVR	Motorized Latch Retraction (EU)	\$868	✓	+\$64	+\$30	✓	+\$21	+\$65	-
PD11-RIM	Mechanical RIM Device	\$454	✓	+\$64	+\$30	✓	+\$21	+\$65	+\$65
PD11-CVR	Mechanical CVR Device	\$488	✓	+\$64	+\$30	✓	+\$21	+\$65	-

\*48" Device mechanics can be relocated at factory for 42" or speciality size for field cut down.



### COMMAND ACCESS PD15 / PD16

#### COMPLETE DEVICE

PD15 / PD16 retrofits Jackson 1200 & AHT 8000/9000. Please Specify Handing for CVR.

SEE PAGE 22 FOR COMPATIBLE EXIT TRIM OPTIONS



PART #	FUNCTION	LIST \$	36"	42"*	48"	ALUM	DURO	REX	LBM
PD15-M-RIM	Motorized Latch Retraction (EU)	\$820	✓	-	+\$30	✓	✓	+\$65	-
PD15-M-CVR	Motorized Latch Retraction (EU)	\$967	✓	-	+\$30	✓	✓	+\$65	-
PD16-RIM	Mechanical RIM Device	\$443	✓	-	+\$30	✓	✓	+\$65	-
PD16-CVR	Mechanical CVR Device	\$464	✓	-	+\$30	✓	✓	+\$65	-

\*48" Device mechanics can be cut down to 42" in the field.



### COMMAND ACCESS PD18 / PD19

#### COMPLETE DEVICE

PD18 / PD19 retrofits Adams Rite 8800 & 8600 series.

PART #	FUNCTION	LIST \$	36"	42"	48"	ALUM	DURO	REX	LBM
PD18-RIM*	Solenoid Latch Retraction (EU)	\$625	✓	-	+\$30	✓	✓	+\$65	-
PD18-CVR	Solenoid Latch Retraction (EU)	\$892	✓	-	+\$30	✓	✓	+\$65	-
PD18-M-RIM	Motorized Latch Retraction (EU)	\$870	✓	-	+\$30	✓	✓	+\$65	
PD18-M-CVR	Motorized Latch Retraction (EU)	\$941	✓	-	+\$30	✓	✓	+\$65	
PD19-RIM	Mechanical RIM Device	\$425	✓	-	+\$30	✓	✓	+\$65	-
PD19-CVR	Mechanical CVR Device	\$470	✓	-	+\$30	✓	✓	+\$65	-

\*Available in 12V or 24V. Please specify when ordering

## COMMAND ACCESS ARCHITECTURAL SERIES

The Command Access PD20 architectural exit device series is a high quality, grade 1 solution for new and retrofit applications. This device is offered in numerous designs in 626 finish. As a retrofit solution, the PD25 standard template retrofits over Von Duprin 98/99 series & PD21 retrofits over the Von Duprin 33/35 series. In addition, the majority of the typical architectural devices on the market. If you need latch retraction in an architectural exit device application, the PD20 series offers a high quality and aesthetically pleasing design in a low cost package.



### COMMAND ACCESS PD21/22

**COMPLETE DEVICE**  
PD21 / PD22 Series retrofits Von Duprin 33/35 RIM & SVR.

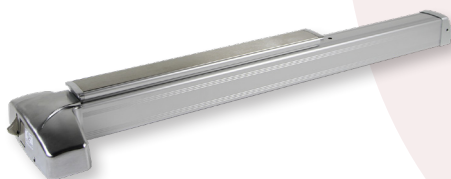
SEE PAGE 22 FOR COMPATIBLE  
EXIT TRIM OPTIONS



√ or \$ = Available  
- = Not Available

PART #	FUNCTION	LIST \$	36"	42"	48"	626	613	FIRE RATED	REX	LBM
PD21-M-RIM	Motorized Latch Retraction (EU)	\$1344	✓	-	+\$60	✓	-	-	+\$65	+\$65
PD21-M-SVR	Motorized Latch Retraction (EU)	\$1685	✓	-	+\$60	✓	-	-	+\$65	-
PD22-RIM	Mechanical RIM Device	\$674	✓	-	+\$60	✓	-	-	+\$65	+\$65
PD22-SVR	Mechanical SVR Device	\$933	✓	-	+\$60	✓	-	-	+\$65	-

- Extension Rods List \$95 for doors up to 10'



### COMMAND ACCESS PD25/26

**COMPLETE DEVICE**  
PD25 / PD26 Series retrofits Cal Royal 7700 & Von Duprin 98/99 RIM & SVR.

PART #	FUNCTION	LIST \$	36"	42"	48"	626	613	FIRE RATED	REX	LBM
PD25-M-RIM	Motorized Latch Retraction (EU)	\$1192	✓	-	+\$40	✓	+\$75	+\$283	+\$65	+\$65
PD25-M-SVR	Motorized Latch Retraction (EU)	\$1578	✓	-	+\$40	✓	+\$75	+\$283	+\$65	-
PD26-RIM	Mechanical RIM Device	\$692	✓	-	+\$40	✓	+\$75	+\$283	+\$65	+\$65
PD26-SVR	Mechanical SVR Device	\$1083	✓	-	+\$40	✓	+\$75	+\$283	+\$65	-

\* Add suffix (F) for Fire Rated.  
- Auxiliary Fire Bolt List \$95  
- Extension Rods List \$95

SEE PAGE 23 FOR COMPATIBLE  
EXIT TRIM OPTIONS





# ELECTRIFIED EXIT DEVICES



## ADAMS RITE MODIFICATION (Customer's Adams Rite 8000 Series Devices) Maintains factory dogging ability.

PART #	FUNCTION	LIST \$	REX	LBM
MDARLP82	Solenoid Latch Retraction (EU)	\$440	+\$65	-
MDARLP84	Solenoid Latch Retraction (EU)	\$440	+\$65	-
MDARLP86	Solenoid Latch Retraction (EU)	\$440	+\$65	-
MDARLP88*	Solenoid Latch Retraction (EU)	\$250	+\$65	-

✓ or \$ = Available  
- = Not Available

\*Available in 12V or 24V. Please specify when ordering

## ACCESSORIES & REPLACEMENT FOR EXIT DEVICES

PART #	FUNCTION	LIST \$
8' Lead	8' Power Lead for Exit Devices	\$35
10' LEAD	Add 10' lead to any switch (per switch)	\$36
QC or CON	8-pin or 12-pin Molex Connectors added to locking device retrofit ElectroLynx or Allegion Connect	\$28
QC or CON w/ lead	8-pin or 12-pin Molex Connectors w/3-5' lead added to locking device retrofit ElectroLynx or Allegion Connect	\$48
Door Cord QC or CON	3-5' Door Cord to connect a QC prepped locking device to the power transfer hinge	\$85
SOL-LP1	Replacement Solenoid Assembly for Electrified Latch Retraction - Single Coil	\$132
SOL-LP2	Replacement Solenoid Assembly for Electrified Latch Retraction - Dual Coil	\$132
SOL-LP3	Replacement Solenoid Assembly for Electrified Latch Retraction - Single Coil (12EU ARLP88)	\$132
SOL-LP4	Replacement Solenoid Assembly for Electrified Latch Retraction - Two-Solenoid Assembly	\$220
SOL-LP5	Replacement Solenoid Assembly for Electrified Latch Retraction - Single Coil (24EU ARLP88)	\$132

NOTES\* See website for specific applications. ElectroLynx® is a registered trademark of Assa Abloy

ElectroLynx® is a registered trademark of Assa Abloy

Allegion Connect® is a registered trademark of Allegion

**molex**



Micro-Fit 3.0™ Interconnect System available to retrofit common quick connection systems such as ElectroLynx® or Allegion Connect®.

## EXIT DEVICE SWITCH OPTIONS

Command Access offers a variety of factory and field installable exit device monitoring switches. Each mechanical switch is SPDT (single pull, double throw) and capable of .5 amp @ 24 volts. Common applications employ these switches to monitor egress and device positioning to ensure the most secure assembly possible.

**REX** - Request to Exit switch - sends a signal to alert the control panel that the door is about to be opened by someone intending to exit from within the secured area. Field Installable REX (Request to Exit) switch kits are available for a variety of exit devices.

**LBM** - Latchbolt Monitor switch - sends a signal to the control panel to monitor the position of the latchbolt. Field Installable LBM (Latchbolt monitor) switch kits are available for exit devices.

Command Access is not a licensee or affiliated, associated or connected with Allegion, Assa Abloy, Dorma, Stanley Security, Adams Rite, Arrow, Corbin Russwin, Mckinney, Pemko, Rixson, Sargent, Yale, Dor-O-matic, Falcon, Ives, Monarch, Schlage, Von Duprin, Best, Precision, Accurate, AHT, Baldwin, Bommer, Cal Royal, CR Laurence, Design Hardware, Emtex, First Choice, FSB, General Lock, Hager, Jackson, Keedex, Lawrence, LSDA, Marks, Marshal-Best, Molex, Omnia, PBB, PDQ, or any of their subsidiaries or affiliates.

## EXIT DEVICE SWITCH OPTIONS

PART #	FUNCTION	LIST \$
REX	Add Request to Exit Switch to device	\$65
LBM	Add Latchbolt Monitor Switch to device	\$65
REX2	Add Double Request to Exit Switch to device	\$147

\* Call Factory for specific device availability

## SWITCH FIELD KITS FOR EXIT DEVICES



Switch Kit List \$	Mechanical Device	Solenoid Device	Motorized Device
--------------------	-------------------	-----------------	------------------

Part #	Function	Switch Kit List \$	Mechanical Device	Solenoid Device	Motorized Device
ARREXKIT-ED	Field Installable Request to Exit Kit for Adams Rite 8000 Series	\$77	✓	✓	-
ARREXKIT2-ED	Field Installable Double Request to Exit Kit for Adams Rite 8000 Series	\$147	✓	✓	-
ARREXKIT-M-ED	Field Installable Request to Exit Kit for MRLK1 Adams Rite Series	\$77	-	-	✓
CRSREXKIT-ED	Field Installable Request to Exit Kit for Cal Royal 22/98 & Sargent 80 Series	\$77	✓	-	✓
CYREXKIT-ED	Field Installable Request to Exit Kit for Corbin 4/5000 & Yale 7000 Series	\$77	✓	-	-
CYREXKIT-M-ED	Field Installable Request to Exit Kit for MRLK1 Corbin & Yale Series	\$77	-	-	✓
ED1REXKIT-M-ED	Field Installable Request to Exit Kit for MRLK1 Philadelphia & Tell Series	\$77	-	-	✓
ED2REXKIT-M-ED	Field Installable Request to Exit Kit for MRLK1 Series LSDA9200, USCAN2100, & Townsteel 1000 Series	\$77	-	-	✓
DORREXKIT-ED	Field Installable Request to Exit Kit for Dorma 9000 series	\$77	✓	✓	✓
MDHREXKIT-M-ED	Field Installable Request to Exit Kit for MRLK1 Marks M9900/8800 Series- MRLK1-MRK/DH Series	\$77	-	-	✓
LLPREXKIT-M-ED	Field Installable Request to Exit Kit for MRLK1-Hager, LSDA9000, Lawrence, PDQ Series	\$77	-	-	✓
PD10REXKIT-ED	Field Installable Request to Exit Kit for Falcon 16/17 & First Choice 36/37 Series	\$77	✓	✓	✓
PD10REXKIT-M-ED	Field Installable Request to Exit Kit for MRLK1 Falcon & First Choice Series	\$77	-	-	✓
PD15REXKIT-ED	Field Installable Request to Exit Kit for Jackson 1285/95 & Kawneer 16/17 Series	\$77	✓	-	-
PD15REXKIT-M-ED	Field Installable Request to Exit Kit for MRLK1 Jackson & Kawneer Series -	\$77	✓	-	✓
PD25REXKIT-ED	Field Installable Request to Exit Kit for PD25/26 & Cal Royal 7700 Series	\$77	✓	-	✓
PREREXKIT-ED	Field Installable Request to Exit Kit for Precision 2000 Series	\$77	✓	✓	-
VDREXKIT-ED	Field Installable Request to Exit Kit for Von Duprin 99/98 & 35/33 Series	\$77	✓	✓	✓
VDREXKIT-LC-ED	Field Installable Low Energy Request to Exit Kit for Von Duprin 99/98 & 35/33 Series	\$88	✓	✓	✓
VDREXKIT2-ED	Field Installable Double Request to Exit Kit for Von Duprin 99/98 & 35/33 Series	\$147	✓	✓	✓
VDLBMKIT-ED	Field Installable Latchbolt Monitor Kit for Von Duprin 99/98 & 35/33 Series	\$88	✓	✓	✓
YAL6REXKIT-M-ED	Field Installable Request to Exit Kit for MRLK1 Yale 6000 Series- MRLK1-YAL6 Series	\$77	-	-	✓



# MODULES & ACCESSORIES

## PM300



PM300: Works with filtered & regulated power supplies.

PM300D: Built-in .5 second delay, works with filtered & regulated power supplies.

PM300AC: Works with unfiltered &/or unregulated power supplies.

PM300ACD: Built-in .5 second delay, works with unfiltered &/or unregulated power supplies.

- **PATENTED POWER BOOSTER MODULE PROVIDES LOCAL POWER BOOST TO SOLENOID DRIVEN LATCH PULLBACK DEVICES**
- **INCREASES WIRE RUNS UP TO 700' ON 2-18GA WIRES**
- **GIVES ANAEMIC POWER SUPPLY/EXIT DEVICE A BOOST - EXTENDING THE LIFE OF THE OPENING!**
- **WORKS WITH MOST 1.5A POWER SUPPLIES - ELIMINATES THE NEED FOR A EXPENSIVE "SPECIALITY" POWER SUPPLY**
- **PLUG & PLAY REPLACEMENT FOR THE VD POTTED CIRCUIT BREAKER**



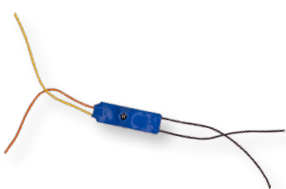
## CRU2

- **INCREASED SOLENOID LIFE**
- **IMPROVED EFFICIENCY FOR CONTINUOUS DUTY APPLICATIONS**
- **SOLVES "WARM" LEVERS ON EL (FAIL SAFE) OPENINGS**
- **SIGNIFICANT ENERGY \$\$ SAVINGS WHEN USED ON CONTINUOUS DUTY APPLICATIONS**
- **HIGH FREQUENCY PULSE SENT TO ENSURES NO SOLENOID DROPOUT**



## POD MODULE

- **DELAY MODULE WITH ADJUSTABLE DELAY .5-5 SECONDS**
- **GREAT FOR DELAY ACTIVATION OF ANY MOTORIZED KITS, MORTISE & CYLINDRICAL LOCKS, & EXIT TRIMS**
- **IDEAL FOR LATCH RETRACTION VESTIBULE SITUATIONS OR DOUBLE DOOR SCENARIOS WITH LIMITED POWER**



## VC SERIES

- **VC3024 CONVERTS 30VDC TO OUTPUT 24VDC**
- **VC2412 CONVERTS 24VDC TO OUTPUT 12VDC**
- **EURO CONNECTOR ON OUTPUT SIDE - EASY INSTALL**
- **MAY ELIMINATE NEED FOR ADDITIONAL POWER SOURCES**
- **POWERS LOCKING DEVICES, PRI'S, CARD READERS, CAMERAS & MORE**



## CAT-AIR-REX



The CAT AIR REX uses focused active infrared to provide the most accurate detection of someone exiting a secured area. AIR-REX focuses right on the door handle solving the issues experienced with standard PIR's: hot air, background objects, & cross traffic.

- **ADJUSTABLE .5-60 SECOND TIME DELAY - ADJUSTABLE DETECTION FROM 20-48"**
- **BUILT-IN SOUNDER TO WORK IN CONJUNCTION WITH DOOR POSITION**
- **MULTIPLE RE-LOCKING MODES FOR TIMED OR DOOR POSITION CONDITIONS**
- **3 DRY CONTACT INPUTS FOR REX, CARD READER, & PUSH BUTTON**
- **OUTPUT SINGLE POLE DOUBLE THROW - LED INDICATORS**

## IDPS SERIES

The IDPS series are independent recessed door contacts for high security applications.

IDPS-1 : 3/4" Diameter standard door contact

IDPS-2 : 1" Diameter fo high security applications

IDPSC-1 : 4-7/8" for vandal resistance applications

- **SINGLE POLE DOUBLE THROW SWITCHES - RARE EARTH MAGNETS**
- **IDPS1/2: AVAILABLE IN WHITE & BROWN**
- **IDPSC-1: BRUSHED STAINLESS STEEL, CORROSION RESISTANT**
- **SELF LOCKING INTO STEEL & WOOD**



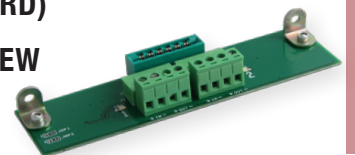
## DTC SERIES DESK TOP CONSOLES



- **AN EFFICIENT METHOD OF CONTROLLING 1-4 ZONES**
- **EACH ZONE OFFERS TWO RELAYS (1-MOMENTARY, 1-MAINTAINED) THAT CAN BE WIRED TO WORK INDEPENDENTLY OR TOGETHER**
- **THERE ARE STATUS LEDS THAT CAN TO ILLUMINATE CONFIGURED FOR GREEN (CLOSED AND SECURE), RED (UNAUTHORIZED OPEN) AND YELLOW (AUTHORIZED UNLOCKED/OPEN)**

## VD2

- **VD2-873 RETROFIT BOARD FOR DISCONTINUED VD873 RELAY BOARD (871-2 CARD)**
- **VD2-914 RETROFIT BOARD FOR DISCONTINUED VD873 RELAY BOARD (2RS CARD)**
- **MOUNTS UP TO EXISTING SCREW HOLES - NO NEED TO PURCHASE A WHOLE NEW POWER SUPPLY**
- **EURO CONNECTOR FOR EASY WIRING VS SCREW TERMINALS**

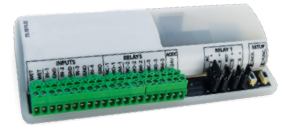




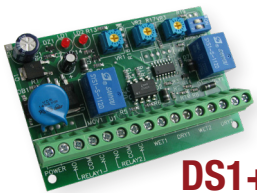
# MODULES & ACCESSORIES

## DS1 SERIES

- 13 PROGRAMMABLE FUNCTIONS INCLUDING: SEQUENCING MODES, TIMER FUNCTIONS, AND TELEPHONE ENTRY SYSTEMS
- 3 ADJUSTABLE TIMER RELAYS, UP TO 60 SECONDS MAXIMUM
- TWO 3-AMP AND ONE 1-AMP RELAYS, ALL WITH BUILT-IN SURGE SUPPRESSION
- SPDT CONTACTS RATED AT 3 AMPS @ 30VDC
- IDEAL FOR LATCH PULLBACKS ON AUTO OPERATOR OPENINGS & PRIVACY RESTROOM APPLICATIONS
- EASY PUSH BUTTON ADJUSTMENTS
- LEDS FOR VISUAL RELAY CONFIRMATION -ACCEPTS WET OR DRY INPUTS



DS1-X



DS1+

- BI-DIRECTIONAL SEQUENCING MODE - 3 ADJUSTABLE DELAYS, UP TO 30 SECONDS MAXIMUM
- IDEAL FOR LATCH PULLBACKS ON AUTO OPERATOR OPENINGS -EASY POTENTIOMETER ADJUSTMENTS
- ACCEPTS WET OR DRY INPUTS - SPDT CONTACTS RATED AT 3 AMPS @ 30VDC
- LED'S FOR VISUAL RELAY CONFIRMATION -INPUT FOR CONNECTION FOR TELEPHONE ENTRY SYSTEM

## FIELD TESTER - PORTABLE POWER SUPPLY

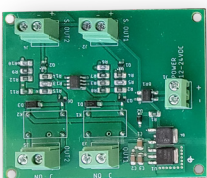
- LIGHT WEIGHT FIELD TESTER FOR ALL ELECTRIFIED HARDWARE
- GREAT FOR TESTING NEW INSTALLATIONS OR TROUBLESHOOTING PROBLEMATIC OPENINGS
- CORDLESS - NO NEED TO FIND AN OUTLET OR CARRY AN EXTENSION CORD
- ADJUSTABLE 11-28 VDC TO TEST ALL PRODUCTS REGARDLESS OF VOLTAGE
- BUILT-IN CONTINUITY TESTER WITH BEEPER & LED
- WORKS WITH DEWALT, MAKITA, & MILWAUKEE BATTERIES



SEE IT IN ACTION!

## 2-WIRE TOUCHLESS ACTUATOR MODULE

- THE 2 WIRE RETROFIT IS IDEAL WHEN UPGRADING A HARDWIRED MECHANICAL ACTUATOR WITH 2 WIRES TO TOUCHLESS SWITCH.
- ALLOWS YOU TO RUN POWER & SIGNAL OVER 2 WIRES. INSTALLS IN-LINE & PROVIDES A DRY CONTACT TRIGGER FOR THE AUTO-OPERATOR
- GREAT ALTERNATIVE TO A WIRELESS RECEIVER + TRANSMITTER COMBO. THE 2WRB IS MORE COST-EFFECTIVE, ALLOWING YOU TO RUN POWER & SIGNAL OVER 2 WIRES. INSTALLS IN-LINE & PROVIDES A DRY CONTACT TRIGGER FOR THE AUTO-OPERATOR.





## TOUCHLESS ACTUATORS



- 12-30VDC/AC - SPDT
- SENSOR DETECTION RANGE UP TO 0”-5”
- PLATE SCREENED “WAVE TO OPEN” OR “ WAVE TO LOCK”
- TIME DELAY SETTABLE FOR .5 TO 30 SECONDS
- BI-COLOR HALO LED STATUS INDICATORS

## POWER MODULES & ACCESSORIES

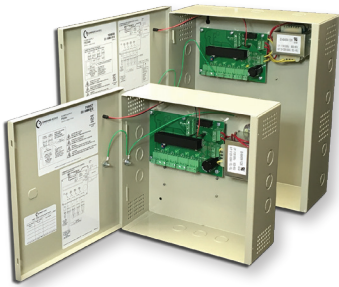
<b>CAT FT</b>	COMPLETE FIELD TESTER, specify battery (DeWalt, Makita, Milwaukee)	<b>\$220</b>
<b>CAT FT ATTACHMENT</b>	Replacement Battery Attachment, specify battery (DeWalt, Makita, Milwaukee)	<b>\$30</b>
<b>CAT FT Dist Pack</b>	15 - Field Tester Distributor Pack (Specify attachments)	<b>\$3150</b>
<b>PM300</b>	Power Module for Solenoids powered by DC Power sources	<b>\$205</b>
<b>PM300-D</b>	Power Module for Solenoids powered by DC Power sources w/ built-in .5 second delay	<b>\$205</b>
<b>PM300-AC</b>	Power Module for Solenoids powered by AC Power sources	<b>\$205</b>
<b>PM300-ACD</b>	Power Module for Solenoids powered by AC Power sources w/ built-in .5 second delay	<b>\$205</b>
<b>MM Module</b>	Replacement Motor Module (Specify device when ordering)	<b>\$165</b>
<b>CRU</b>	Current Reduction Unit for solenoid powered Mortise & Cylindrical locks, Strikes & Exit Trim	<b>\$37</b>
<b>VC Series</b>	Voltage Converter 30VDC to 24VDC or Voltage Converter 24VDC to 12VDC - Specify	<b>\$44</b>
<b>DS1+</b>	Door Sequencer	<b>\$171</b>
<b>DS1-X</b>	Door Sequencer	<b>\$195</b>
<b>CAT-AIR-REX</b>	Active Infrared Request to Exit	<b>\$226</b>
<b>IDPS1</b>	Independent DPS switch installs in frame & alum (wood, hollow metal, & FRP)	<b>\$31</b>
<b>IDPS2</b>	Independent High Security DPS switch installs in frame & alum (wood, hollow metal, & FRP)	<b>\$41</b>
<b>IDPSSC-1</b>	Vandal Resistance Independent Concealed Magnetic Contact switch DPS switch installs in frame & alum (wood, hollow metal, & FRP)	<b>\$87</b>
<b>CAT-IVES-DP2</b>	IVES Dust Proof Strike w/ Internal DPS	<b>\$150</b>
<b>POD</b>	Power On Delay Module	<b>65</b>
<b>TA1 Series</b>	Touchless actuators with LEDS & mechanical override	<b>\$220</b>
<b>2WM</b>	2-Wire Touchless Acuator Retrofit Module	<b>\$215</b>
<b>RB1</b>	Remote Buzzer Single Gang	<b>\$61</b>
<b>RB1-NS</b>	Remote Buzzer Narrow Stile	<b>\$61</b>
<b>DTC MOMA2</b>	Remote 2 Door Desktop Console	<b>\$580</b>
<b>DTC MOMA4</b>	Remote 4 Door Desktop Console	<b>\$800</b>
<b>DTC MOMA8</b>	Remote 8 Door Desktop Console	<b>\$1775</b>
<b>VD2 Series</b>	Replacement Relay Board for Von Duprin PS873 (871-2 board) or PS914 (2RS board) - Specify	<b>\$195</b>



# POWER SUPPLIES



## COMMAND ACCESS LOCKING HARDWARE POWER SUPPLY SERIES



- BUILT TO RUN LOCKING HARDWARE - MOTORIZED/SOLENOID LP DEVICES, CYLINDRICAL/MORTISE LOCKS, & EXIT TRIM.
- ROBUST SOLID-STATE OUTPUTS - PROTECTS SYSTEM RELAYS
- INTERRUPTION FREE BATTERY-BACK UP
- LINEAR DESIGN ENSURES AMPLE IN-RUSH & HOLD CURRENT FOR LATCH PULLBACK APPLICATIONS
- DOOR MOUNTED LED POWER INDICATOR
- REMOVABLE EURO CONNECTORS -EASY WIRING FOR THE INSTALLER
- BUILT TO LAST IN THE USA



UL294 6<sup>TH</sup> EDITION LISTING

PS210	PS202/202B	
PS220/220B	PS204/204B	
PS440B		
PS480B		

## POWER SUPPLIES

### FOR ALL LATCH PULLBACK/EXIT DEVICES

<b>PS210</b>	1.5A, 24V regulated PS w/boost circuitry for up to (2) electric latch pullback devices. Includes (1) solid state input/output	<b>\$275</b>
<b>PS220</b>	2A, 24V regulated PS w/boost circuitry for up to (2) electric latch pullback devices. Includes (2) solid state inputs/outputs and a fire alarm link. (1) 24VDC Power Tap	<b>\$342</b>
<b>PS220B</b>	2A, 24V regulated PS w/boost circuitry for up to (2) electric latch pullback devices. Includes (2) solid state inputs/outputs, battery charging circuit, and a fire alarm link. (1) 24VDC Power Tap. Battery Back-up	<b>\$404</b>
<b>PS440B</b>	4A, 24V regulated PS w/boost circuitry is capable of powering up to (4) electric latch pullback devices. Includes (4) solid state inputs/outputs, battery charging circuit, and a fire alarm link. Battery Back-up	<b>\$446</b>
<b>PS480B</b>	4A, 24V regulated PS w/boost circuitry for up to (8) electric latch pullback devices. Includes (8) solid state inputs/outputs, battery charging circuit, and a fire alarm link. Battery Back-up	<b>\$489</b>

## POWER SUPPLIES

### FOR MOTORIZED LATCH RETRACTION, MORTISE/CYLINDRICAL LOCK, & EXIT TRIM

<b>PS202</b>	2A, 24V regulated PS w/boost circuitry for up to (2) MOTORIZED electric latch pullback devices. Includes (2) solid state inputs/outputs, and a fire alarm link	<b>\$258</b>
<b>PS202B</b>	2A, 24V regulated PS w/boost circuitry for up to (2) MOTORIZED electric latch pullback devices. Includes (2) solid state inputs/outputs, and a fire alarm link. Battery Back-up	<b>\$320</b>
<b>PS204</b>	2A, 24V regulated PS w/boost circuitry for up to (4) MOTORIZED electric latch pullback devices. Includes (4) solid state inputs/outputs, and a fire alarm link	<b>\$302</b>
<b>PS204B</b>	2A, 24V regulated PS w/boost circuitry for up to (4) MOTORIZED electric latch pullback devices. Includes (4) solid state inputs/outputs, and a fire alarm link. Battery Back-up	<b>\$365</b>

## POWER SUPPLY MATRIX

PS LINE 24VDC	AMPERAGE (CONTINUOUS)	AMPERAGE (BOOST)	INPUTS	OUTPUTS	BATTERY BACK-UP	FIRE ALARM LINK	24V POWER TAP (CONSTANT POWER)	LOCKING HARDWARE (MORTISE /CYLINDRICAL LOCK/ EXIT TRIM)	LOCKING HARDWARE (MOTORIZED EXIT DEVICES)	LOCKING HARDWARE (SOLENOID EXIT DEVICE LPM/PM300HO)	METAL ENCLOSURE
PS210	1.5	2.5	1	1	-	✓	-	2	2	2	S
PS220	2	3	2	2	-	✓	✓	2	2	2	S
PS220B	2	3	2	2	✓	✓	✓	2	2	2	L
PS440B	4	6	4	4	✓	✓	-	4	4	4	L
PS480B	4	6	8	8	✓	✓	-	8	8	8	L
PS202	2	3	2	2	-	✓	-	2	2	-	S
PS202B	2	3	2	2	✓	✓	-	2	2	-	L
PS204	2	3	4	4	-	✓	-	4	4	-	S
PS204B	2	3	4	4	✓	✓	-	4	4	-	L

SMALL ENCLOSURE: 11" x 11" x 4"

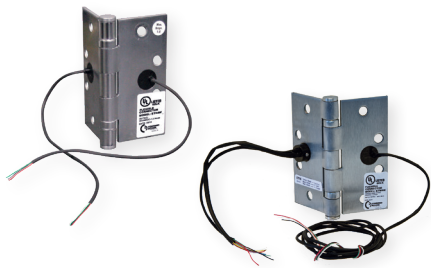
LARGE ENCLOSURE: 13" x 15.5" x 5"

## POWER SUPPLIES & AUXILIARY BOARDS

<b>PS1-B0</b>	Board Only to replace PS1 - 1A, 24V regulated power supply w/boost circuitry for up to (2) electric latch pullback devices. Includes (1) solid state input/output	<b>\$220</b>
<b>PS-OP-2</b>	Replacement Relay Board for PS202/202B/220/220B (Specify Series)	<b>\$187</b>
<b>PS-OP-4</b>	Replacement Relay Board for PS204/204B/440B (Specify Series)	<b>\$197</b>
<b>PS-OP-8</b>	Replacement Relay Board for PS480B	<b>\$207</b>
<b>SW3</b>	2.4A 27VDC regulated power supply w/ (3) non-fused outputs for electric strikes, mortise locks and cylindrical locks. **NOT UL LISTED**	<b>\$180</b>
<b>VD2-873</b>	Replacement Relay Board for Von Duprin PS873 (871-2 board)	<b>\$195</b>
<b>VD2-914</b>	Replacement Relay Board for Von Duprin PS914 (2RS board)	<b>\$195</b>
<b>DS1+</b>	Command Access delay/sequencer board for auto operator integration and door sequencing.	<b>\$171</b>
<b>DS1-X</b>	Command Access delay/sequencer board for auto operator integration and door sequencing.	<b>\$195</b>
<b>BB12V7</b>	Set of (2) 12VDC 7AH Batteries for Power Supplies with Battery Back-Up	<b>\$160</b>



# POWER TRANSFER HINGES



- 4' LEAD STANDARD - LESS POINTS OF FAILURE
- UL-F RATED & ACCEPTED IN THE "PERFECT RACEWAY" PROGRAM
- WIRE HEAVY COMBINATIONS FOR LATCH PULLBACK DEVICES - UP TO 12WH (2-20GA + 10-28GA)
- NON-CONDUCTIVE WIRE ACCESS CAP FOR BETTER PROTECTION
- CENTER TO CENTER PREP ON 5SW HINGES
- LARGE HINGE INVENTORY



## ELEMENTS OF A PART NUMBER

TYPE
ETH - Energy Transfer Hinge
ETM - Energy Transfer Monitor Hinge

WIRES	
M - Monitor Only	2WH - (2/18ga)
2W - (2/20ga)	4WH - (2/18ga+2/26ga)
4W - (4/26ga)	6WH - (2/18ga+4/28ga)
6W - (6/26ga)	8WH - (2/20ga+6/28ga)
8W - (8/28ga)	10WH* - (2/20ga+8/28ga)
10W - (10/28ga)	12WH* - (2/20ga+10/28ga)
12W - (12/28ga)	

\*NOT AVAILABLE ON ALL HINGES SIZES .

SIZE / HANDING	
4.0 x 4.0 (SQ OR RC)	5.0 x 5.0
4.5 x 4.0 (SQ OR RC)	4.5 x 6.0 (WT)
4.5 x 4.5	5.0 x 6.0 (WT)
5.0 x 4.0	LH - Left Hand
5.0 x 4.5	RH - Right Hand

OPTIONS
QC - Molex Connectors HT - Hospital Tip (SS/Brass Only)
4' Leads - ALWAYS SUPPLIED AT NO CHARGE

FINISH (Steel Base Metal)	
600/P - Prime Coat	641/10A - Antique Bronze Laq.
605-632/3 - Bright Brass	613-640/10B - Anti. Bronze Oil
606-633/4 - Satin Brass	619-646/15 - Satin Nickel
609-638/5 - Satin Brass Antique	625-651/26 - Bright Chrome
611-637/9 - Bright Bronze	626-652/26D - Satin Chrome
612-639/10 - Satin Bronze	693/L1 - Black
FINISH (Brass Base Metal)	
600/P - Prime Coat	613/10B - Antique Bronze Oil
605/3 - Bright Brass	619/15 - Satin Nickel
606/4 - Satin Brass	625/26 - Bright Chrome
609/5 - Satin Brass Antique	626/26D - Satin Chrome
611/9 - Bright Bronze	693/L1 - Black
612/10 - Satin Bronze	
FINISH (Stainless Steel Base Metal)	
629 - Polished Stainless	630 - Brushed Stainless

STYLE	
3SW - 3 Knuckle Standard Weight	CATPIVOT - 3/4" Offset Pivot
3HW - 3 Knuckle Heavy Weight	5SWSC - CAT Swingclear Standard weight (specify straight or bevelled)
5SW - 5 Knuckle Standard Weight	
5HW - 5 Knuckle Heavy Weight	
3/4" - offset pivot (top/intermediate)	PP - Pocket pivot (center hung)
1-1/2" - offset pivot (top/intermediate)	SC - Swing Clear Hinge
TP - Top pivot (center hung)	RB - Raised Barrel

## EXTRA HINGES FOR MODIFICATION

Due to the nature of the modification process, please send 1 extra hinge for every 8 to be modified. We will return any hinges not need back with your order.  
For Example: 1-8 hinges, 1 extra | 9-16 hinges, 2 extra .

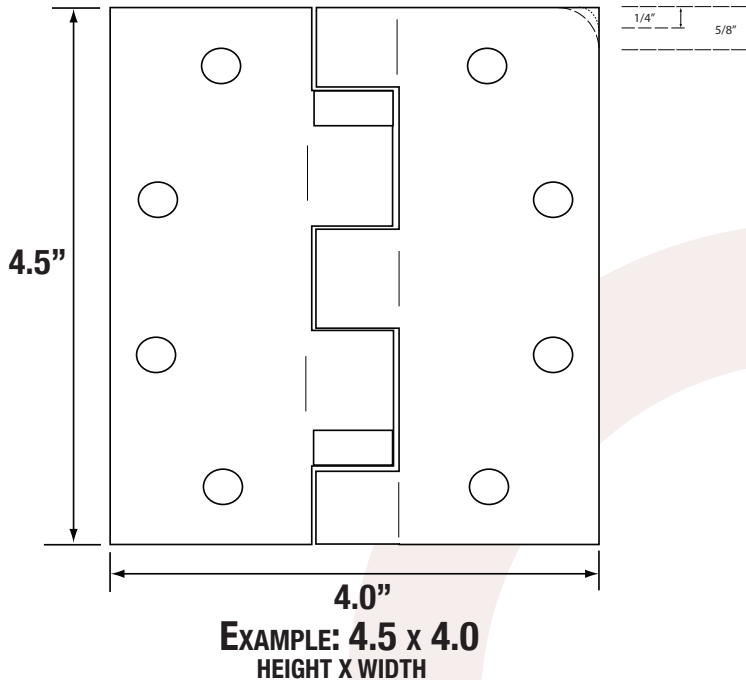
## QUICK REFERENCE

HINGES	PAGE	HINGE	PAGE	HINGE	PAGE
ETH 5K	47	ETM 3K	50	PIVOTS	52
ETH 3K	48	SWING CLEAR	51	DOOR LOOP	53
ETM 5K	49	SPECIALTY HINGES	51		

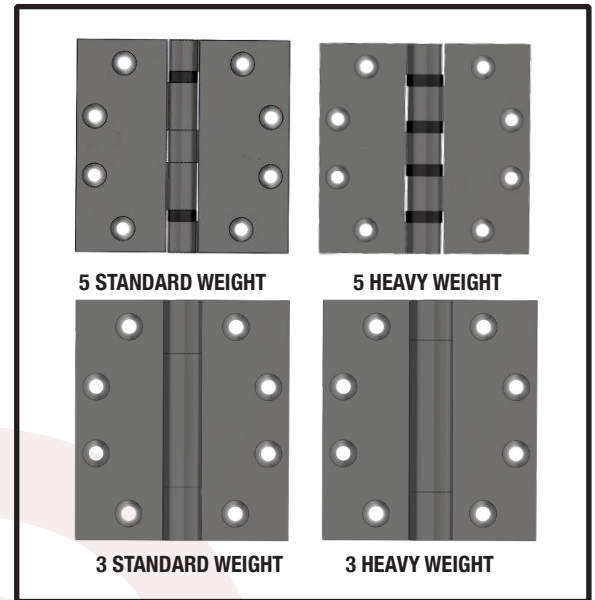
# HOW TO ORDER

ALWAYS HERE TO HELP

## HOW TO MEASURE A HINGE REFERENCE



## TYPES OF HINGES



## EXAMPLES

### MODIFICATION ONLY - BUTT HINGE

	TYPE	WIRES	SIZE	BASE	STYLE	HANDING	OPTIONS	COMPLETE PART #
Part #	ETM	4W	4540	Steel	3CB1	-	QC	ETM4WMOD Steel 3SW QC
List \$	-	\$210	-	-	-	-	\$46	\$256

### COMPLETE ENERGY TRANSFER HINGE

	TYPE	WIRES	SIZE	FINISH	STYLE	HANDING	OPTIONS	COMPLETE PART #
Part #	ETH	8W	4545	626	BB79	-	4' Lead	ETH8W4545-626 BB79
List \$	-	\$156	-	-	-	-	N/C	\$156

### MODIFICATION ONLY - PIVOT/SPECIALTY HINGE

	TYPE	WIRES	SIZE	BASE	STYLE	HANDING	OPTIONS	COMPLETE PART #
Part #	ETH	10W	45	Steel	SC	-	QC	ETM4WMOD Steel 3SW QC
List \$	-	\$316	-	-	-	-	\$46	\$362

### COMPLETE ENERGY TRANSFER PIVOT

	TYPE	WIRES	SIZE	FINISH	STYLE	HANDING	OPTIONS	COMPLETE PART #
Part #	ETH	4WH	-	626	CATPIVOT	RH	4' Lead	ETH4WH-626-CATPIVOT RH
List \$	-	\$376	-	-	-	-	N/C	\$376

Micro-Fit 3.0™ Interconnect System available to retrofit common quick connection systems such as ElectroLynx® or Allegion Connect®.

www.commandaccess.com | US Customer Support 888.622.2377

molex





# POWER TRANSFER HINGES

## HINGE CROSS REFERENCE SHEET

	COMMAND ACCESS	HAGER	STANLEY	MCKINNEY	PBB	IVES	CAL ROYAL	BOMMER
5 KNUCKLE - SW STEEL BASE	BB79	BB1279	FBB179 CB179	TA2714	BB81	5BB1	BB31	BB5000
5 KNUCKLE - SW BRASS BASE	BB91	BB1191	FB191 CB191	TA2314	BB21	5BB1	SBB31	BB5001
5 KNUCKLE - SW STAINLESS STEEL BASE	BB91	BB1191	FBB191 CB191	TA2314	BB51	5BB1	BB31-630	BB5002
5 KNUCKLE - HW STEEL BASE	BB68	BB1168	FBB168 CB168	T4A3786	4B81	5BB1HW	BB5200	BB5004
5 KNUCKLE - HW BRASS BASE	BB99	BB1199	FB199 CB199	T4A3385	4B81	5BB1HW	N/A	BB5005
5 KNUCKLE - HW STAINLESS STEEL BASE	BB99	BB1199	FBB199 CB199	T4A3385	4B21	5BB1HW	BB5200-630	BB5006
3 KNUCKLE - SW STEEL BASE	CB70	AB700	CB1900R	TA714	CB81	3CB1	BB200	LB8000
3 KNUCKLE - SW BRASS BASE	CB80	AB800	CB1960R	TA314	CB21	3CB1	N/A	LB8001
3 KNUCKLE - SW STAINLESS STEEL BASE	CB80	AB800	CB1960R	TA314	CB51	3CB1	BB2200-630	LB8002
3 KNUCKLE - HW STEEL BASE	CB75	AB750	CB1901R	TA786	4C81	3CB1HW	BB3300	LB8004
3 KNUCKLE - HW BRASS BASE	CB85	AB850	CB1961R	TA386	4C21	3CB1HW	N/A	LB8005
3 KNUCKLE - HW STAINLESS STEEL BASE	CB85	AB850	CB1961R	TA386	4C51	3CB1HW	BB3300-630	LB8006



## 5 KNUCKLE STANDARD TRANSFER HINGES - ETH

ALWAYS HERE TO HELP

STEEL BASE (BB79)	2W	4W	6W	8W	10W	12W	2WH	4WH	6WH	8WH	10WH	12WH
4.0 x 4.0	\$124	\$124	\$146	\$156	\$187	\$187	-	-	-	-	-	-
4.5 x 4.0	\$124	\$124	\$146	\$156	\$187	\$187	\$169	\$184	\$194	\$206	\$237	\$247
4.5 x 4.5	\$124	\$124	\$146	\$156	\$187	\$187	\$169	\$184	\$194	\$206	\$237	\$247
5.0 x 4.5	\$149	\$149	\$167	\$187	\$210	\$210	\$194	\$209	\$219	\$237	\$260	\$270
5.0 x 5.0	\$171	\$171	\$189	\$210	\$232	\$232	\$216	\$231	\$241	\$260	\$282	\$292
BRASS BASE (BB91)	2W	4W	6W	8W	10W	12W	2WH	4WH	6WH	8WH	10WH	12WH
4.0 x 4.0	\$158	\$158	\$175	\$193	\$210	\$210	-	-	-	-	-	-
4.5 x 4.0	\$158	\$158	\$175	\$193	\$210	\$210	\$203	\$218	\$228	\$243	\$260	\$270
4.5 x 4.5	\$158	\$158	\$175	\$193	\$210	\$210	\$203	\$218	\$228	\$243	\$260	\$270
5.0 x 4.5	\$175	\$175	\$193	\$210	\$230	\$230	\$220	\$235	\$245	\$260	\$280	\$290
5.0 x 5.0	\$189	\$189	\$210	\$230	\$250	\$250	\$234	\$249	\$259	\$280	\$300	\$310
STAINLESS STEEL BASE (BB91)	2W	4W	6W	8W	10W	12W	2WH	4WH	6WH	8WH	10WH	12WH
4.0 x 4.0	\$171	\$171	\$190	\$205	\$247	\$247	-	-	-	-	-	-
4.5 x 4.0	\$171	\$171	\$190	\$205	\$247	\$247	\$216	\$231	\$241	\$255	\$297	\$307
4.5 x 4.5	\$171	\$171	\$190	\$205	\$247	\$247	\$216	\$231	\$241	\$255	\$297	\$307
5.0 x 4.5	\$190	\$190	\$210	\$230	\$263	\$263	\$235	\$250	\$260	\$280	\$313	\$323
5.0 x 5.0	\$210	\$210	\$230	\$247	\$280	\$280	\$255	\$270	\$280	\$297	\$330	\$340

## 5 KNUCKLE HEAVY TRANSFER HINGES - ETH

STEEL BASE (BB68)	2W	4W	6W	8W	10W	12W	2WH	4WH	6WH	8WH	10WH	12WH
4.5 x 4.0	\$164	\$164	\$181	\$195	\$212	\$212	\$209	\$224	\$234	\$245	\$262	\$272
4.5 x 4.5	\$164	\$164	\$181	\$195	\$212	\$212	\$209	\$224	\$234	\$245	\$262	\$272
5.0 x 4.5	\$184	\$184	\$199	\$212	\$229	\$229	\$229	\$244	\$254	\$262	\$279	\$289
5.0 x 5.0	\$197	\$197	\$215	\$224	\$241	\$241	\$242	\$257	\$267	\$274	\$291	\$301
BRASS BASE (BB99)	2W	4W	6W	8W	10W	12W	2WH	4WH	6WH	8WH	10WH	12WH
4.5 x 4.0	\$184	\$184	\$202	\$220	\$239	\$239	\$229	\$244	\$254	\$270	\$289	\$299
4.5 x 4.5	\$184	\$184	\$202	\$220	\$239	\$239	\$229	\$244	\$254	\$270	\$289	\$299
5.0 x 4.5	\$202	\$202	\$220	\$239	\$257	\$257	\$247	\$262	\$272	\$289	\$307	\$317
5.0 x 5.0	\$215	\$215	\$232	\$250	\$275	\$275	\$260	\$275	\$285	\$300	\$325	\$335
STAINLESS STEEL BASE (BB99)	2W	4W	6W	8W	10W	12W	2WH	4WH	6WH	8WH	10WH	12WH
4.5 x 4.0	\$206	\$206	\$215	\$234	\$262	\$262	\$251	\$266	\$276	\$284	\$312	\$322
4.5 x 4.5	\$206	\$206	\$215	\$234	\$262	\$262	\$251	\$266	\$276	\$284	\$312	\$322
5.0 x 4.5	\$220	\$220	\$239	\$255	\$283	\$283	\$265	\$280	\$290	\$305	\$333	\$343
5.0 x 5.0	\$232	\$232	\$250	\$267	\$296	\$296	\$277	\$292	\$302	\$317	\$346	\$356

## 5 KNUCKLE ENERGY TRANSFER HINGES- ETH

MODIFICATION ONLY	2W	4W	6W	8W	10W	12W	2WH	4WH	6WH	8WH	10WH	12WH
5 KNUCKLE - SW STEEL OR BRASS	\$108	\$108	\$126	\$142	\$162	\$172	\$157	\$168	\$186	\$202	\$222	\$232
5 KNUCKLE - SW STAINLESS STEEL	\$146	\$146	\$163	\$180	\$197	\$207	\$195	\$206	\$223	\$240	\$257	\$267
5 KNUCKLE - HW STEEL OR BRASS	\$121	\$121	\$137	\$154	\$171	\$181	\$170	\$181	\$197	\$214	\$231	\$241
5 KNUCKLE - HW STAINLESS STEEL	\$160	\$160	\$177	\$195	\$212	\$223	\$209	\$220	\$237	\$255	\$272	\$283



# POWER TRANSFER HINGES

## 3 KNUCKLE STANDARD TRANSFER HINGES - ETH

STEEL BASE (CB70)	2W	4W	6W	8W	10W	12W	2WH	4WH	6WH	8WH	10WH	12WH
4.5 x 4.0	\$138	\$138	\$155	\$172	\$189	\$189	\$183	\$198	\$208	\$222	\$239	\$252
4.5 x 4.5	\$138	\$138	\$155	\$172	\$189	\$189	\$183	\$198	\$208	\$222	\$239	\$252
5.0 x 4.5	\$158	\$158	\$175	\$193	\$210	\$210	\$203	\$218	\$228	\$243	\$260	\$276
5.0 x 5.0	\$175	\$175	\$193	\$210	\$228	\$228	\$220	\$235	\$245	\$260	\$278	\$292
BRASS BASE (CB80)	2W	4W	6W	8W	10W	12W	2WH	4WH	6WH	8WH	10WH	12WH
4.5 x 4.0	\$167	\$167	\$184	\$202	\$220	\$220	\$212	\$227	\$237	\$252	\$270	\$280
4.5 x 4.5	\$167	\$167	\$184	\$202	\$220	\$220	\$212	\$227	\$237	\$252	\$270	\$280
5.0 x 4.5	\$184	\$184	\$202	\$220	\$239	\$239	\$229	\$244	\$254	\$270	\$289	\$299
5.0 x 5.0	\$197	\$197	\$215	\$232	\$252	\$252	\$242	\$257	\$267	\$282	\$302	\$312
STAINLESS STEEL BASE (CB80)	2W	4W	6W	8W	10W	12W	2WH	4WH	6WH	8WH	10WH	12WH
4.5 x 4.0	\$181	\$181	\$198	\$215	\$232	\$232	\$226	\$241	\$251	\$265	\$282	\$292
4.5 x 4.5	\$181	\$181	\$198	\$215	\$232	\$232	\$226	\$241	\$251	\$265	\$282	\$292
5.0 x 4.5	\$202	\$202	\$220	\$237	\$257	\$257	\$247	\$262	\$272	\$287	\$307	\$317
5.0 x 5.0	\$215	\$215	\$237	\$255	\$272	\$272	\$260	\$275	\$285	\$305	\$322	\$332

## 3 KNUCKLE HEAVY TRANSFER HINGES - ETH

STEEL BASE (CB75)	2W	4W	6W	8W	10W	12W	2WH	4WH	6WH	8WH	10WH	12WH
4.5 x 4.0	\$164	\$164	\$183	\$202	\$215	\$215	\$209	\$224	\$234	\$252	\$265	\$275
4.5 x 4.5	\$164	\$164	\$183	\$202	\$215	\$215	\$209	\$224	\$234	\$252	\$265	\$275
5.0 x 4.5	\$184	\$184	\$204	\$224	\$237	\$237	\$229	\$244	\$254	\$274	\$287	\$297
5.0 x 5.0	\$206	\$206	\$226	\$246	\$259	\$259	\$251	\$266	\$276	\$296	\$309	\$319
BRASS BASE (CB85)	2W	4W	6W	8W	10W	12W	2WH	4WH	6WH	8WH	10WH	12WH
4.5 x 4.0	\$180	\$180	\$197	\$215	\$232	\$232	\$225	\$240	\$250	\$265	\$282	\$292
4.5 x 4.5	\$180	\$180	\$197	\$215	\$232	\$232	\$225	\$240	\$250	\$265	\$282	\$292
5.0 x 4.5	\$197	\$197	\$215	\$232	\$250	\$250	\$242	\$257	\$267	\$282	\$300	\$310
5.0 x 5.0	\$220	\$220	\$237	\$255	\$272	\$272	\$265	\$280	\$290	\$305	\$322	\$332
STAINLESS STEEL BASE (CB85)	2W	4W	6W	8W	10W	12W	2WH	4WH	6WH	8WH	10WH	12WH
4.5 x 4.0	\$194	\$194	\$212	\$234	\$257	\$257	\$239	\$254	\$264	\$284	\$307	\$317
4.5 x 4.5	\$194	\$194	\$212	\$234	\$257	\$257	\$239	\$254	\$264	\$284	\$307	\$317
5.0 x 4.5	\$215	\$215	\$234	\$257	\$275	\$275	\$260	\$275	\$285	\$307	\$325	\$335
5.0 x 5.0	\$237	\$237	\$257	\$279	\$296	\$296	\$282	\$297	\$307	\$329	\$346	\$356

## 3 KNUCKLE ENERGY TRANSFER HINGES- ETH

MODIFICATION ONLY	2W	4W	6W	8W	10W	12W	2WH	4WH	6WH	8WH	10WH	12WH
3 KNUCKLE - SW STEEL OR BRASS	\$112	\$112	\$129	\$146	\$163	\$173	\$161	\$172	\$189	\$206	\$223	\$233
3 KNUCKLE - SW STAINLESS STEEL	\$154	\$154	\$171	\$187	\$205	\$215	\$203	\$214	\$231	\$247	\$265	\$275
3 KNUCKLE - HW STEEL OR BRASS	\$137	\$137	\$154	\$171	\$188	\$198	\$186	\$197	\$214	\$231	\$248	\$258
3 KNUCKLE - HW STAINLESS STEEL	\$167	\$167	\$185	\$202	\$220	\$230	\$216	\$227	\$245	\$262	\$280	\$290

Command Access is not a licensee or affiliated, associated or connected with Allegion, Assa Abloy, Dorma, Stanley Security, Adams Rite, Arrow, Corbin Russwin, Mckinney, Pemko, Rixson, Sargent, Yale, Dor-O-matic, Falcon, Ives, Monarch, Schlage, Von Duprin, Best, Precision, Accurate, AHT, Baldwin, Bommer, Cal Royal, CR Laurence, Design Hardware, Emtex, First Choice, FSB, General Lock, Hager, Jackson, Keedex, Lawrence, LSDA, Marks, Marshal-Best, Molex, Omnia, PBB, PDQ, or any of their subsidiaries or affiliates.





### 5 KNUCKLE STANDARD TRANSFER HINGES - ETM

STEEL BASE (BB79)	M	2W	4W	6W	8W	10W	2WH	4WH	6WH	8WH
4.5 x 4.0	\$132	\$220	\$220	\$239	\$257	\$267	\$265	\$295	\$310	\$332
4.5 x 4.5	\$132	\$220	\$220	\$239	\$257	\$267	\$265	\$295	\$310	\$332
5.0 x 4.5	\$149	\$237	\$237	\$257	\$275	\$285	\$282	\$312	\$327	\$350
5.0 x 5.0	\$171	\$259	\$259	\$279	\$296	\$307	\$304	\$334	\$349	\$371
BRASS BASE (BB91)	M	2W	4W	6W	8W	10W	2WH	4WH	6WH	8WH
4.5 x 4.0	\$158	\$248	\$248	\$263	\$281	\$298	\$303	\$323	\$338	\$356
4.5 x 4.5	\$158	\$248	\$248	\$263	\$281	\$298	\$303	\$323	\$338	\$356
5.0 x 4.5	\$175	\$265	\$265	\$281	\$298	\$316	\$320	\$340	\$355	\$373
5.0 x 5.0	\$197	\$287	\$287	\$298	\$320	\$338	\$342	\$362	\$377	\$395
STAINLESS STEEL BASE (BB91)	M	2W	4W	6W	8W	10W	2WH	4WH	6WH	8WH
4.5 x 4.0	\$175	\$263	\$263	\$281	\$298	\$316	\$318	\$338	\$353	\$373
4.5 x 4.5	\$175	\$263	\$263	\$281	\$298	\$316	\$318	\$338	\$353	\$373
5.0 x 4.5	\$193	\$281	\$281	\$298	\$316	\$334	\$336	\$356	\$371	\$391
5.0 x 5.0	\$215	\$303	\$303	\$320	\$338	\$355	\$358	\$378	\$393	\$413

### 5 KNUCKLE HEAVY TRANSFER HINGES - ETM

STEEL BASE (BB68)	M	2W	4W	6W	8W	10W	2WH	4WH	6WH	8WH
4.5 x 4.0	\$173	\$264	\$264	\$282	\$299	\$309	\$319	\$339	\$354	\$374
4.5 x 4.5	\$173	\$264	\$264	\$282	\$299	\$309	\$319	\$339	\$354	\$374
5.0 x 4.5	\$191	\$282	\$282	\$299	\$318	\$328	\$337	\$357	\$372	\$393
5.0 x 5.0	\$213	\$305	\$305	\$323	\$328	\$339	\$360	\$380	\$395	\$403
BRASS BASE (BB99)	M	2W	4W	6W	8W	10W	2WH	4WH	6WH	8WH
4.5 x 4.0	\$187	\$272	\$272	\$289	\$307	\$324	\$327	\$347	\$362	\$382
4.5 x 4.5	\$187	\$272	\$272	\$289	\$307	\$324	\$327	\$347	\$362	\$382
5.0 x 4.5	\$204	\$289	\$289	\$307	\$324	\$342	\$344	\$364	\$379	\$399
5.0 x 5.0	\$226	\$312	\$312	\$328	\$346	\$364	\$367	\$387	\$402	\$421
STAINLESS STEEL BASE (BB99)	M	2W	4W	6W	8W	10W	2WH	4WH	6WH	8WH
4.5 x 4.0	\$204	\$289	\$289	\$307	\$324	\$342	\$344	\$364	\$379	\$399
4.5 x 4.5	\$204	\$289	\$289	\$307	\$324	\$342	\$344	\$364	\$379	\$399
5.0 x 4.5	\$232	\$320	\$320	\$338	\$355	\$373	\$375	\$395	\$410	\$430
5.0 x 5.0	\$248	\$334	\$334	\$351	\$396	\$385	\$389	\$409	\$424	\$471

### 5 KNUCKLE ENERGY TRANSFER HINGES- ETM

MODIFICATION ONLY	M	2W	4W	6W	8W	10W	2WH	4WH	6WH	8WH
5 KNUCKLE - SW STEEL OR BRASS	\$114	\$204	\$204	\$220	\$239	\$257	\$248	\$263	\$283	\$301
5 KNUCKLE - SW STAINLESS STEEL	\$149	\$239	\$239	\$257	\$272	\$289	\$283	\$301	\$306	\$334
5 KNUCKLE - HW STEEL OR BRASS	\$123	\$210	\$210	\$230	\$248	\$263	\$255	\$275	\$291	\$307
5 KNUCKLE - HW STAINLESS STEEL	\$158	\$248	\$248	\$263	\$281	\$298	\$291	\$307	\$324	\$342



# POWER TRANSFERS HINGES

## 3 KNUCKLE STANDARD TRANSFER HINGES - ETM

STEEL BASE (CB70)	M	2W	4W	6W	8W	10W	2WH	4WH	6WH	8WH
4.5 x 4.0	\$140	\$230	\$230	\$248	\$263	\$281	\$285	\$305	\$320	-
4.5 x 4.5	\$140	\$230	\$230	\$248	\$263	\$281	\$285	\$305	\$320	-
5.0 x 4.5	\$158	\$248	\$248	\$265	\$281	\$298	\$303	\$323	\$338	-
5.0 x 5.0	\$180	\$269	\$269	\$287	\$303	\$320	\$324	\$344	\$359	-
BRASS BASE (CB80)	M	2W	4W	6W	8W	10W	2WH	4WH	6WH	8WH
4.5 x 4.0	\$158	\$248	\$248	\$263	\$281	\$298	\$303	\$323	\$338	\$356
4.5 x 4.5	\$158	\$248	\$248	\$263	\$281	\$298	\$303	\$323	\$338	\$356
5.0 x 4.5	\$175	\$265	\$265	\$281	\$298	\$316	\$320	\$340	\$355	\$373
5.0 x 5.0	\$197	\$287	\$287	\$303	\$320	\$338	\$342	\$362	\$377	\$395
STAINLESS STEEL BASE (CB80)	M	2W	4W	6W	8W	10W	2WH	4WH	6WH	8WH
4.5 x 4.0	\$180	\$267	\$267	\$285	\$303	\$320	\$322	\$342	\$357	\$378
4.5 x 4.5	\$180	\$267	\$267	\$285	\$303	\$320	\$322	\$342	\$357	\$378
5.0 x 4.5	\$197	\$285	\$285	\$303	\$320	\$338	\$340	\$360	\$375	\$395
5.0 x 5.0	\$220	\$307	\$307	\$327	\$342	\$360	\$362	\$382	\$397	\$417

## 3 KNUCKLE HEAVY TRANSFER HINGES - ETM

STEEL BASE (CB75)	M	2W	4W	6W	8W	10W	2WH	4WH	6WH	8WH
4.5 x 4.0	\$167	\$257	\$257	\$272	\$289	\$307	\$312	\$327	\$344	-
4.5 x 4.5	\$167	\$257	\$257	\$272	\$289	\$307	\$312	\$327	\$344	-
5.0 x 4.5	\$184	\$275	\$275	\$289	\$307	\$324	\$330	\$344	\$362	-
5.0 x 5.0	\$206	\$296	\$296	\$312	\$328	\$346	\$351	\$367	\$383	-
BRASS BASE (CB85)	M	2W	4W	6W	8W	10W	2WH	4WH	6WH	8WH
4.5 x 4.0	\$187	\$272	\$272	\$289	\$307	\$324	\$327	\$347	\$362	\$382
4.5 x 4.5	\$187	\$272	\$272	\$289	\$307	\$324	\$327	\$347	\$362	\$382
5.0 x 4.5	\$204	\$289	\$289	\$307	\$324	\$342	\$344	\$364	\$379	\$399
5.0 x 5.0	\$226	\$312	\$312	\$328	\$346	\$364	\$367	\$387	\$402	\$421
STAINLESS STEEL BASE (CB85)	M	2W	4W	6W	8W	10W	2WH	4WH	6WH	8WH
4.5 x 4.0	\$210	\$298	\$298	\$316	\$340	\$358	\$353	\$373	\$388	\$415
4.5 x 4.5	\$210	\$298	\$298	\$316	\$340	\$358	\$353	\$373	\$388	\$415
5.0 x 4.5	\$228	\$316	\$316	\$334	\$358	\$375	\$371	\$391	\$406	\$433
5.0 x 5.0	\$250	\$338	\$338	\$355	\$379	\$397	\$393	\$413	\$428	\$454

## 3 KNUCKLE ENERGY TRANSFER HINGES- ETM

MODIFICATION ONLY	M	2W	4W	6W	8W	10W	2WH	4WH	6WH	8WH
3 KNUCKLE - SW STEEL OR BRASS	\$123	\$210	\$210	\$228	\$246	\$263	\$255	\$272	\$289	\$307
3 KNUCKLE - SW STAINLESS STEEL	\$175	\$263	\$263	\$281	\$298	\$316	\$307	\$324	\$342	\$360
3 KNUCKLE - HW STEEL OR BRASS	\$140	\$230	\$230	\$248	\$265	\$283	\$275	\$291	\$309	\$326
3 KNUCKLE - HW STAINLESS STEEL	\$193	\$281	\$281	\$298	\$316	\$334	\$324	\$353	\$371	\$389

## COMMAND ACCESS ENERGY TRANSFER SWINGCLEAR

ETH2W (2/20GA)	ETH4W (4/26GA)	ETH6W (6/26GA)	ETH8W (8/28GA)	ETH10W (10/28GA)	ETH2WH (2/18GA)	ETH4WH (2/18GA + 2/26GA)	ETH6WH (2/18GA + 4/28GA)	ETH8WH (2/20GA + 6/28GA)
----------------	----------------	----------------	----------------	------------------	-----------------	--------------------------	--------------------------	--------------------------

Specify Bevelled or Square. 626 Finish. Consult factory for other finishes.

5SW STEEL BASED SC	\$360	\$360	\$379	\$395	\$412	\$409	\$420	\$439	\$455
5HW STEEL BASED SC	\$403	\$403	\$423	\$438	\$456	\$452	\$463	\$483	\$498

## ENERGY TRANSFER SPECIALTY- MOD

HINGE TYPE	2W	4W	6W	8W	10W	2WH	4WH	6WH	8WH
SWINGCLEAR - SW STEEL HINGE	\$263	\$263	\$281	\$298	\$316	\$312	\$323	\$341	\$358
SWINGCLEAR - HW STEEL HINGE	\$289	\$289	\$307	\$324	\$342	\$338	\$349	\$367	\$384
SWINGCLEAR - SW SS HINGE	\$298	\$298	\$316	\$334	\$351	\$347	\$358	\$376	\$394
SWINGCLEAR - HW SS HINGE	\$324	\$324	\$342	\$360	\$377	\$373	\$384	\$402	\$420
RAISED BARREL - SW STEEL HINGE	\$263	\$263	\$281	\$298	\$316	\$312	\$323	\$341	\$358
RAISED BARREL - HW STEEL HINGE	\$289	\$289	\$307	\$324	\$342	\$338	\$349	\$367	\$384
RAISED BARREL - SW SS HINGE	\$298	\$298	\$316	\$334	\$351	\$347	\$358	\$376	\$394
RAISED BARREL - HW SS HINGE	\$324	\$324	\$342	\$360	\$377	\$373	\$384	\$402	\$420
HALF OR FULL SURFACE - SW STEEL	\$275	\$275	\$291	\$309	\$326	\$324	\$335	\$351	\$369
HALF OR FULL SURFACE - HW STEEL	\$291	\$291	\$309	\$326	\$344	\$340	\$351	\$369	\$386
HALF OR FULL SURFACE - SW SS	\$307	\$307	\$324	\$342	\$360	\$356	\$367	\$384	\$402
HALF OR FULL SURFACE - HW SS	\$328	\$328	\$346	\$364	\$381	\$377	\$388	\$406	\$424

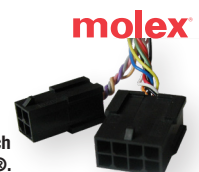
**NOTE:** Wire access hole location on all hinges, regardless of hinge manufacturer, are located per Command Access Templates unless otherwise requested. Our standard templates are available on our website at [www.commandaccess.com](http://www.commandaccess.com).

## ADDITIONAL OPTIONS FOR POWER TRANSFER

DOOR 4' LEAD	Standard 4' Lead on Door Side - Included Standard with every hinge	n/c
FRAME 4' LEAD	Add 4' Lead on Frame Side	CALL
WT	Additional charge to supply a wide throw hinge	\$44
QC	8-pin or 12-pin Molex Connector added to hinge	\$46
QC w/ LEAD	8-pin or 12-pin Molex Connector added to hinge	\$74
DOOR CORD QC	8-pin or 12-pin Molex Connector added to hinge	\$85
HT	Add Hospital Tip to Hinge (SS/Brass Only)	\$88
CAT HINGE REWIRE	Rewire Command Access Hinge	\$88
OTHER HINGE REWIRE	Rewire another manufacturers hinge	\$110

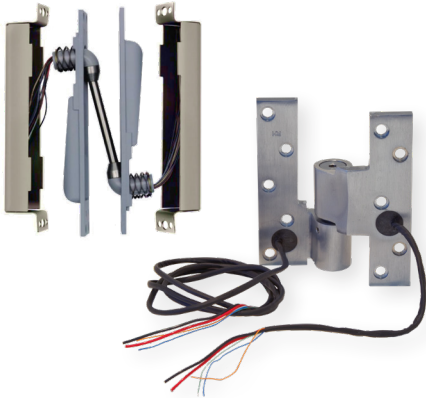
Alligion Connect® is a registered trademark of Alligion  
ElectroLynx® is a registered trademark of Assa Abloy

Micro-Fit 3.0™ Interconnect System available to retrofit common quick connection systems such as ElectroLynx® or Alligion Connect®.





# POWER TRANSFERS



— = Not Applicable    ✓ = Available

## COMMAND ACCESS ENERGY TRANSFER PIVOTS

- CAT PIVOT = EQUAL TO RIXON EM 19
- CAT EPT = EQUAL TO VON DUPRIN EPT
- 4' LEAD AVAILABLE AT NO EXTRA CHARGE
- MULTIPLE WIRE CONFIGURATIONS
- 3-YEAR "NO HASSLE" WARRANTY



WIRE MORTISE/CYLINDRICAL LOCK, & EXIT TRIM						WIRE HEAVY LATCH RETRACTION				
2W (2/20GA)	4W (4/26GA)	6W (6/26GA)	8W (8/28GA)	10W (10/28GA)	12W (12/28GA)	2WH (2/18GA)	4WH (2/18GA + 2/26GA)	6WH (2/18GA + 4/28GA)	8WH (2/20GA + 6/28GA)	10WH (2/20GA + 8/28GA)

Specify Handing, Finishes available in 613, 625, 626.

**NOTE:** Wire access hole location on all hinges, regardless of hinge manufacturer, are located per Command Access Templates unless otherwise requested. Our standard templates are available on our website at [www.commandaccess.com](http://www.commandaccess.com).

INTERMEDIATE PIVOT - CAT PIVOT	\$316	\$316	\$334	\$351	\$369	\$379	\$365	\$376	\$394	\$411	\$429
--------------------------------	-------	-------	-------	-------	-------	-------	-------	-------	-------	-------	-------

## ENERGY TRANSFER PIVOTS - MOD

3/4" OFFSET BRASS OR ALUMINUM	\$298	\$298	\$316	\$334	\$351	\$362	\$347	\$358	\$376	\$394	\$411
3/4" OFFSET STAINLESS STEEL	\$324	\$324	\$342	\$360	\$377	\$388	\$373	\$384	\$402	\$420	\$437
1-1/2" OFFSET BRASS OR ALUMINUM	\$307	\$307	\$324	\$342	\$360	\$370	\$356	\$367	\$384	\$402	\$420
1-1/2" OFFSET STAINLESS STEEL	\$334	\$334	\$351	\$369	\$385	\$396	\$383	\$394	\$411	\$429	\$445
TOP, POCKET, OR CENTER HUNG PIVOT	\$175	\$175	\$193	\$210	\$228	\$238	\$224	\$235	\$253	\$270	\$288

## CONCEALED EPT

CAT EPT ALUM	Concealed Power Transfer ALUM specify (2 Wire or 10 Wire), same prep as Von Duprin EPT	\$440
CAT EPT DURO	Concealed Power Transfer DURO specify (2 Wire or 10 Wire), same prep as Von Duprin EPT	\$440

## ADDITIONAL OPTIONS FOR POWER TRANSFER

DOOR 4' LEAD	Standard 4' Lead on Door Side - Included Standard with every hinge	n/c
FRAME 4' LEAD	Add 4' Lead on Frame Side	CALL
WT	Additional charge to supply a wide throw hinge	\$44
QC	8-pin or 12-pin Molex Connector added to hinge	\$46
QC w/ LEAD	8-pin or 12-pin Molex Connector added to hinge	\$74
DOOR CORD QC	8-pin or 12-pin Molex Connector added to hinge	\$85
HT	Add Hospital Tip to Hinge (SS/Brass Only)	\$88
CAT HINGE REWIRE	Rewire Command Access Hinge	\$88
OTHER HINGE REWIRE	Rewire another manufacturers hinge	\$106

Micro-Fit 3.0™ Interconnect System available to retrofit common quick connection systems such as ElectroLynx® or Allegion Connect®.

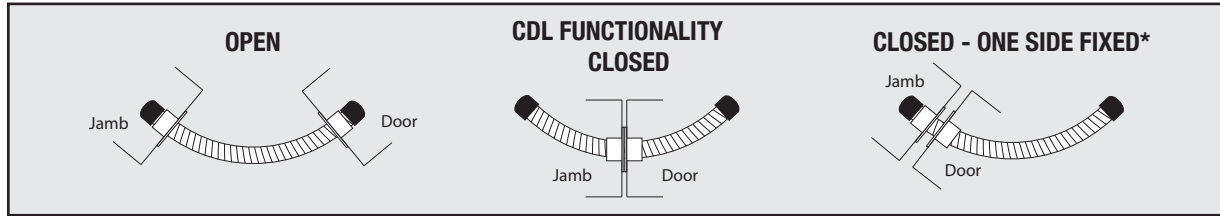




# CONCEALED DOOR LOOPS

- DURABLE FINISH
- SPECIAL 1/4" FLEXIBLE ARMoured CONDUIT (I.D. 1/4")
- SUPPORTS UP TO 180° SWING (STANDARD BUTT AND CONTINUOUS HINGE APPLICATIONS)
- SUPPORTS UP TO 105° SWING ON 3/4 OFFSET PIVOTS
- EASY INSTALLATION
- VARIABLE MOUNTING LOCATIONS
- FITS UP TO 2-12GA WIRES

## FOR CONTINUOUS AND BUTT HINGE APPLICATIONS

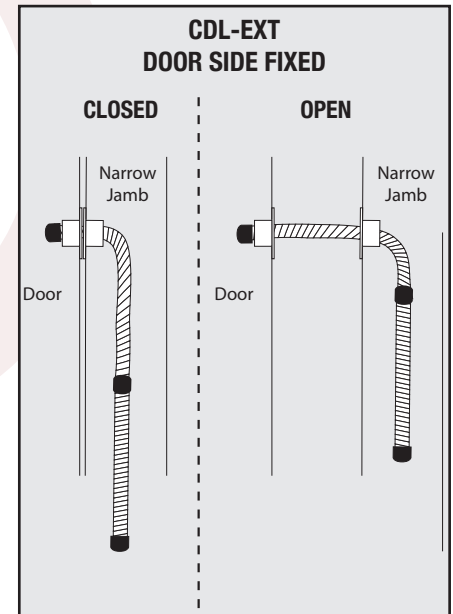


<b>CDL-AL</b>	Aluminum Finish, 6" total length.	<b>\$48</b>
<b>CDL-BLK</b>	Black Finish, 6" total length.	<b>\$48</b>
<b>CDL-AL-FX</b>	Aluminum Finish, 6" total length. Includes 1 side fixed for complete concealment in opposite side.	<b>\$52</b>
<b>CDL-BLK-FX</b>	Black Finish, 6" total length. Includes 1 side fixed for complete concealment in opposite side.	<b>\$52</b>



## FOR 3/4" OFFSET PIVOT APPLICATIONS

<b>CDL-AL-EXT</b>	Aluminum Finish, 12" total length. Includes 1 side fixed for complete concealment in opposite side & extended length for wire guidance	<b>\$62</b>
<b>CDL-BLK-EXT</b>	Black Finish, 12" total length. Includes 1 side fixed for complete concealment in opposite side & extended length for wire guidance	<b>\$62</b>
<b>CDL-AL-EXT2</b>	Aluminum Finish, 18" total length. Includes 1 side fixed for complete concealment in opposite side & extended length for wire guidance	<b>\$80</b>
<b>CDL-BLK-EXT2</b>	Black Finish, 18" total length. Includes 1 side fixed for complete concealment in opposite side & extended length for wire guidance	<b>\$80</b>



# DOOR LOOPS

The door loop is a low cost method of transferring low voltage power from the door frame to the locking device.

<b>DL-20A</b>	20" Door Loop, Aluminum Finish (Can be cut in the field to length)	<b>\$44</b>
<b>DL-20D</b>	20" Door Loop, DURO Finish (Can be cut in the field to length)	<b>\$44</b>
<b>NDL-18A</b>	Narrow 18" Door Loop, Aluminum Finish (Can be cut in the field to length)	<b>\$38</b>
<b>NDL-18D</b>	Narrow 18" Door Loop, DURO Finish (Can be cut in the field to length)	<b>\$38</b>





# C.A.T. INSTALLATION TOOLS



CAT-HIT-CLAMP



CAT-HIT-60

<b>CAT-HIIT-21</b>	MORTISE LOCK CYLINDER GUIDE	<b>CALL</b>
<b>CAT-HIIT-22</b>	MORTISE LOCK DOUBLE CYLINDER GUIDE	<b>CALL</b>
<b>CAT-HIIT-50</b>	CYLINDRICAL LOCK BORE HOLES	<b>CALL</b>
<b>CAT-HIIT-111</b>	GRADE 1 CYLINDRICAL LOCK FACE HOLES	<b>CALL</b>
<b>CAT-HIT-60</b>	WIRE RACEWAY DRILL GUIDE FOR ELECTRIFIED LOCKS	<b>CALL</b>
<b>CAT-HIIT-66- CLAMP</b>	CLAMP SYSTEM FOR ALL HIT-66 GUIDES	<b>CALL</b>
<b>CAT-HIIT-66-110</b>	CYLINDRICAL LOCKS	<b>CALL</b>
<b>CAT-HIIT-66-230</b>	BEST 35 & 45 SERIES MORTISE LOCKS	<b>CALL</b>
<b>CAT-HIIT-66-235</b>	CORBIN RUSSWIN 2200 SERIES MORTISE LOCK	<b>CALL</b>
<b>CAT-HIIT-66-240</b>	FALCON MA SERIES MORTISE LOCK	<b>CALL</b>
<b>CAT-HIIT-66-280</b>	SARGENT 8000 SERIES MORTISE LOCK	<b>CALL</b>
<b>CAT-HIIT-66-282</b>	SCHLAGE L SERIES MORTISE LOCK	<b>CALL</b>
<b>CAT-HIT-32VD9W</b>	VON DUPRIN 98/99 WOOD RIM & SVR	<b>CALL</b>
<b>CAT-DT-200</b>	CYLINDRICAL LOCK BORE HOLES	<b>CALL</b>
<b>CAT-DT-100</b>	CYLINDRICAL LOCK BORE HOLES	<b>CALL</b>
<b>DOOR DOLLY 1</b>	MINI DOOR DOLLY	<b>CALL</b>
<b>DOOR DOLLY 2</b>	DOOR DOLLY	<b>CALL</b>
<b>5SW-TEMP<sup>1</sup></b>	5K STANDARD WEIGHT TEMPLATE FOR WIRE ACCESS HOLES, SPECIFY SIZE	<b>\$20</b>
<b>5HW-TEMP<sup>1</sup></b>	5K HEAVY WEIGHT TEMPLATE FOR WIRE ACCESS HOLES, SPECIFY SIZE	<b>\$20</b>
<b>3SW-TEMP<sup>1</sup></b>	3K STANDARD WEIGHT TEMPLATE FOR WIRE ACCESS HOLES, SPECIFY SIZE	<b>\$20</b>
<b>3HW-TEMP<sup>1</sup></b>	3K HEAVY WEIGHT TEMPLATE FOR WIRE ACCESS HOLES, SPECIFY SIZE	<b>\$20</b>

1. Free with hinge orders of 10+



CAT-HIT-66-282



Door Dolly 1



Door Dolly 2

# TERMS AND CONDITIONS



**PRICES:** All list prices are subject to change without prior notice and are not guaranteed. All prices are per unit (each) unless otherwise specified and do not include sales or local taxes. All shipments will be made at prices prevailing at time of shipment.

**EXPEDITE FEE:** A customer may request that an order be expedited. An additional charge of up to 25% of the cost of the expedited items may be charged. Expedite lead times are subject to availability. Please call for approval.

**PAYMENT TERMS:** The standard credit terms of Command Access Technologies (herein called CAT) are 2% 10 days net 30. Net 30 means the check shall be received at CAT on or before 30 days from the date of the invoice. Interest will be charged at the rate of 2% per month on past due accounts.

**ACCEPTANCE OF ORDERS AND/OR QUOTATIONS:** Possession of prices from CAT does not commit CAT to accept any order. CAT reserves the right to refuse any order and will not be bound to fulfill any order until it has been accepted by a representative of CAT and confirmed by a written acknowledgement. Quotations are valid for ninety (90) days following the date of the quotation.

**OPEN ACCOUNT STATUS:** CAT reserves the right to decline or discontinue direct sales to any customer who does not meet an annual minimum sales requirement of **5000.00** in invoiced purchases.

**ACKNOWLEDGEMENTS:** An acknowledgement is an exact copy of a customer's order as entered by CAT and should be verified by the customer. If the acknowledgement does not agree with said customer's understanding CAT should be advised within (3) three days or the order will be billed as acknowledged. CAT's sales terms shall apply irrespective of any special stipulation appearing in customer order, unless specifically acknowledged and accepted by CAT.

**RETURNED GOODS:** The customer must advise customer service at CAT of merchandise to be returned and a Returned Goods Authorization (RGA) will be issued. CAT will not accept goods returned without an RGA. Full credit against further purchases or a replacement will be made at the option of CAT if upon investigation reveals that goods were shipped in error or if goods are defective in workmanship or material. Otherwise, a restocking fee of not less than (25) twenty-five percent will be charged. All merchandise must be PREPAID AND PROPERLY PACKED. All C.O.D. orders shipped to CAT will be refused. Returned goods must be packed in their original boxes. If product has been installed it cannot be returned but only repaired, please consult factory for repair costs (unless under warranty). No credit will be given for product not in its original form unless, upon CAT's inspection, product is found to be defective. If product is returned as defective and is found to be operational, product will be returned to customer (C.O.D.) and no credit will be issued.

**MINIMUM CHARGE:** No order will be invoiced for less than \$25.00 net plus shipping charges.

**CHANGES OR CANCELLATIONS:** When a special order is accepted, and entered, no change can be made and the order is non-cancellable. Cancellation for items already packed for shipment will be removed if possible. A twenty-five percent (25%) restocking fee will apply.

**CLAIMS OR SHORTAGES:** Every possible care is taken in the final examination of packing of goods, and no complaints will be accepted unless made promptly upon receipt of goods. No claim will be allowed for work done by others, consequential damages or other expenditure, and CAT's understanding to repair or replace defective goods is its only liability. No claim for damage shortage or loss in transit will be accepted unless notice is given in writing to the carrier and to CAT within (10) ten days of receipt of goods.

**BACK CHARGES:** CAT is not responsible for, does not authorize, and will not accept any charges for the cost of labor, travel or material incurred by anyone other than CAT for any installation, repair, service, or replacement unless incurred with CAT's prior written consent and agreement.

**FREIGHT CHARGES:** All goods are invoiced F.O.B. CAT, Yorba Linda, California. Freight charges are prepaid and are added to invoice. Consignee pays C.O.D. freight charges when delivered to the Freight Company the shipment becomes the property of the purchaser, who assumes the risk of loss or damage in transit. If invoice exceeds \$1,000.00 net, full service freight by FedEx or our choice within the continental U.S.A. (excluding Hawaii, Alaska, Guam & Puerto Rico) is deductible, provided invoice is paid within set terms. Not all products qualify for freight deduction. Airfreight and other special shipments are not deductible. CAT does not ship to directly to Canada, for all Canadian destinations please contact Connection Network Agencies at 905-823-3002.

**PRODUCT CHANGES OR CANCELLATIONS:** CAT reserves the right to modify or discontinue any price, product, design, function and finish without prior notice.

**PRODUCT FINISHES:** Although CAT modifies products with the finest protective coatings, they do have their limitations. In time, they might deteriorate from extremes in climate, frequency of use, perspiration, or other factors. CAT does not consider excessive wear or tarnishing of the finish because of any of the above conditions as a defect. It is considered a normal process, which cannot be avoided. Thus, CAT cannot guarantee product finishes and will not repair or replace finishes under this warranty.



**AMERICAN MADE**

**C.A.T**  
COMMITMENT

**NO HASSLE**  
**3 YEAR**  
**WARRANTY**

**INNOVATIVE**  
**SOLUTIONS**



**ALWAYS HERE TO HELP**

**Follow us and you'll never lock alone!**



[www.commandaccess.com](http://www.commandaccess.com)  
[orders@commandaccess.com](mailto:orders@commandaccess.com)  
Live Chat Available  
Customer Support 1-888-622-2377



**CATALOG PRICE LIST**  
10.1.2021



**NO HASSLE**  
**3 YEAR**  
**WARRANTY**